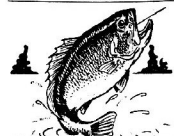


THIS REPRODUCTION IS COMPRISED
OF THE BEST AND MOST COMPLETE
SET OF ORIGINAL IMAGES AVAILABLE
AT THE TIME OF THIS PROJECT'S
INITIAL START. THE ORIGINAL PAPER,
INK, FONT, FONT SIZE AND QUALITY
OF THE MICROFILMED IMAGES
CONTRIBUTE AND AFFECT THE
QUALITY OF THE FINAL PRODUCT.



Western-Auto-Resumes ANNUAL BIG BASS CONTEST

Complete information may be obtained at ERNEST EVANS' WESTERN AUTO STORE
Prestonsburg, Ky.

Wayland Man, Victim Monday in 50th Year

Samuel Reed, 48 years old, retired miner, succumbed Monday at the home at Wayland of his daughter, Mrs. Turner Tackett, to kidney and heart ailments.

A native of Fayette county, W. Va., Mr. Reed had resided with his daughter at Wayland for the last few months. His body was taken to Mr. Hope W. Va., by the Ryan Funeral Home and burial was made there today (Thursday).

TO GIVE CONCERT

A concert will be given Friday evening, May 23, at 8 o'clock at the grade school auditorium by the Prestonsburg high school band, girls and the junior high chorus. There will be no admission charge.

JUNIOR-SENIOR PROM

FRIDAY, MAY 16
HOURS: 10-2

Jordan Embry's Orchestra

\$1.50 stag—\$2.50 couple

EVERYBODY INVITED

PRESTONSBURG GYM

DEROSSETT'S SERVICE STATION

Located below red light on Broadway

STANDARD OIL PRODUCTS

Wash Jobs, Grease Jobs, Oil Changes
Tires and Tubes

ROBERT DEROSSETT
CALVIN DEROSSETT, Owners
We Serve You Better

TOLER AUTO FYR-STOP

Is back on the job and will be calling on you soon.
FREE SURVEYS

B. H. TOLER, Mgr.
HAROLD, KY.

Martin's Restaurant

IN THE NEW HALL ADDITION
ALLEN, KY.

Open Seven Days a Week

OUR SUNDAY SPECIALS
STEAKS AND
FRIED CHICKEN

A. J. MARTIN, Owner

CAVALCADE OF HISTORY

Born—Reading, Penn., Nov. 2, 1734. Served as blacksmith and wagoner in Braddock's disastrous expedition. Explored and guided settlers into Kentucky and Missouri. The town of Booneville, Ky., and Booneville, Mo., both named for him. Congress recognized his distinguished service to the country by making him special grant of land in 1811. Died, Frankfort, Ky., Sept. 26, 1820.

PREPARED AND PUBLISHED FOR THE PUBLIC BY
J. W. CALL & SON Funeral Directors, Pikeville, Ky.
AN INSTITUTION OF COMMUNITY SERVICE
2nd Street at Grace Ave. Phone 77

RUPTURE

Get Comfort and Security:

THE NEW REID TRUSS

Is being praised by hundreds of Kentuckians. It holds like your own three middle fingers, from the outside, without coming into your abdomen. Holds in place without leg straps. Waterproof. This truss will be fitted by an expert with a splendid record of success with even the most difficult cases, at the Auxier hotel, Prestonsburg, Ky., Thursday, May 22; also at the James Hatchery hotel, Pikeville, Friday, May 23. Service for men, women, and children. Moderately priced. Ask for Mr. W. L. ASPY, 9 a.m., till 9 p.m.

KENTUCKY TRUSS SERVICE
Anchorage, Ky.

in an envelope bearing May's frank. Broke save the letter to Mr. Gen. Alden Walth, chief of C.W.S., who took it to Europe and delivered it.

In an attempt to avoid calling General Eisenhower, Peasey tried to get the letter into the record at that point, but defense objections made it virtually certain the chief of staff will have to take the stand to identify it.

The record shows that Garson was found guilty of refusing to place his mortar company in a dangerous position which he considered tactically suicidal. In this opinion he was supported by most of the entire court that found him guilty recommended that sentence be suspended. This was done.

Gen. Dwight D. Eisenhower, army chief of staff, has been subpoenaed as a defense witness in the trial.

Counsel for May disclosed this today but indicated to reporters that Eisenhower would not be called to the stand until the defense begins presentation of its case.

Secretary of State Marshall, former chief of staff, was subpoenaed last Monday, but the court excused him until the defense is actually ready to call him to the stand.

The defense counsel have promised to show that May was not the only Congressman who asked special treatment for certain soldiers during the war.

Warren Magee, attorney for the 72-year-old Kentuckian, produced a written list of Congressmen he said had intervened with the War Department.

The list came up during testimony by Col. Clarence J. Haddock, Jr., army liaison man for the House Military Committee, whom May needed for years.

Haddock identified it as a record of the names of House members for whom he wrote letters "asking action on requests regarding army personnel." The list covers the period from Feb. 1944 to date.

May told a reporter he will offer it in evidence when the defense begins presenting its case.

Haddock testified yesterday that Maj. Freeman and Murray Garson, killed to him on 15 or 20 different occasions about differences or other special treatment for 40 to 45 individuals either in army service or eligible for induction.

The name of General Eisenhower came up in Haddock's testimony on the court-martial today. Haddock

said he advised May to write direct to Eisenhower, then Allied commander in Europe. He said May did so.

An initial attempt by Magee to go into alleged instances of intervention by other Congressmen was cut off by Justice Henry A. Schweinhaut. The court ruled that those cases had nothing to do with May's trial.

TUESDAY—A New York banker said today war contractor Murray Garson paid off an overdue \$5,000 debt for former Kentucky Congressman May.

Secretary of War Patterson said that on three occasions May asked him for help for munitions firms in which Murray Garson was interested.

These two pieces of evidence virtually ended the government's three-week-long case.

Defense attorneys have indicated that they will explain away some \$55,000 of other funds deposited to May's accounts by the Garsons.

They have promised to show that equal amounts were checked out for legislative purposes in furtherance of the Garsons' interests, not May's.

Secretary Patterson followed to the stand a score of lesser lights in defense.

He was told that Garson was unable to appear in person because of illness. Other bank officers vouched for Murray's signature on the endorsement, he said, so he cashed the check and delivered the May notes.

Consequently to \$5,261.24 with interest and \$4,798.76 change to Freeman.

Defense attorneys have indicated that they will explain away some \$55,000 of other funds deposited to May's accounts by the Garsons.

They have promised to show that equal amounts were checked out for legislative purposes in furtherance of the Garsons' interests, not May's.

Secretary Patterson followed to the stand a score of lesser lights in defense.

He was told that Garson was unable to appear in person because of illness. Other bank officers vouched for Murray's signature on the endorsement, he said, so he cashed the check and delivered the May notes.

Consequently to \$5,261.24 with interest and \$4,798.76 change to Freeman.

Defense attorneys have indicated that they will explain away some \$55,000 of other funds deposited to May's accounts by the Garsons.

They have promised to show that equal amounts were checked out for legislative purposes in furtherance of the Garsons' interests, not May's.

Secretary Patterson followed to the stand a score of lesser lights in defense.

He was told that Garson was unable to appear in person because of illness. Other bank officers vouched for Murray's signature on the endorsement, he said, so he cashed the check and delivered the May notes.

Consequently to \$5,261.24 with interest and \$4,798.76 change to Freeman.

Defense attorneys have indicated that they will explain away some \$55,000 of other funds deposited to May's accounts by the Garsons.

They have promised to show that equal amounts were checked out for legislative purposes in furtherance of the Garsons' interests, not May's.

Secretary Patterson followed to the stand a score of lesser lights in defense.

He was told that Garson was unable to appear in person because of illness. Other bank officers vouched for Murray's signature on the endorsement, he said, so he cashed the check and delivered the May notes.

Consequently to \$5,261.24 with interest and \$4,798.76 change to Freeman.

Defense attorneys have indicated that they will explain away some \$55,000 of other funds deposited to May's accounts by the Garsons.

They have promised to show that equal amounts were checked out for legislative purposes in furtherance of the Garsons' interests, not May's.

Secretary Patterson followed to the stand a score of lesser lights in defense.

He was told that Garson was unable to appear in person because of illness. Other bank officers vouched for Murray's signature on the endorsement, he said, so he cashed the check and delivered the May notes.

Consequently to \$5,261.24 with interest and \$4,798.76 change to Freeman.

the War Department who have testified to favors sought by May for the Garsons and Freeman. Patterson was undersecretary at the time of the transactions.

On March 1, 1945, he said, May called to ask about a reduction of a War Department contract with the Batavia Metal Products Company, a Garson firm.

Two years later, Patterson said, May called again, on March 24, 1946, to ask about an Army-Navy "E" award for the Batavia Company. In September, 1946, May called Patterson to his office and introduced him to "two officials of the Erie Basin Metal Products Company," another Garson firm. The officials whom he could not identify, protested the War Department's action in withholding about \$800,000 funds from the company pending renegotiation proceedings. He referred them to another War Department officer and left, he said.

Asked whether May ever called on behalf of any other contractors, Patterson replied "probably he did, but I can't be specific about it."

On cross-examination, he admitted that he received "many" calls from other congressmen, which he handled in the same way. May never asked him to do anything improper, he said.

The Fayette County Garden Club helped organize a men's garden club at the Veterans' hospital, Lexington.

On and after this date, I will no longer be responsible for any debts incurred by any person other than myself; nor will any checks on my account be honored by payment unless issued in person by me to the party cashing the check.

May 8, 1947.

J. D. CRAGHER
CHIEF, KY.

21-pd.

Earl's Motorcycle Sales

IMPORTED BRITISH MOTORCYCLES

Royal Enfield Model G 346 C.C.

PARTS FOR ALL MAKES

Polaroid motorcycle goggles with eight extra lenses \$7.99 values

Now only \$2.50

Genuine army flying corps leather shearing flying helmet (new)

\$2.00

See us for your motorcycling needs.

Across from Bank Josephine

Phone 4062

Earl's Motorcycle Sales

IMPORTED BRITISH MOTORCYCLES

Royal Enfield Model G 346 C.C.

PARTS FOR ALL MAKES

Polaroid motorcycle goggles with eight extra lenses \$7.99 values

Now only \$2.50

Genuine army flying corps leather shearing flying helmet (new)

\$2.00

See us for your motorcycling needs.

Across from Bank Josephine

Phone 4062

Earl's Motorcycle Sales

IMPORTED BRITISH MOTORCYCLES

Royal Enfield Model G 346 C.C.

PARTS FOR ALL MAKES

Polaroid motorcycle goggles with eight extra lenses \$7.99 values

Now only \$2.50

Genuine army flying corps leather shearing flying helmet (new)

\$2.00

See us for your motorcycling needs.

Across from Bank Josephine

Phone 4062

Earl's Motorcycle Sales

IMPORTED BRITISH MOTORCYCLES

Royal Enfield Model G 346 C.C.

PARTS FOR ALL MAKES

Polaroid motorcycle goggles with eight extra lenses \$7.99 values

Now only \$2.50

Genuine army flying corps leather shearing flying helmet (new)

\$2.00

See us for your motorcycling needs.

Across from Bank Josephine

Phone 4062

Earl's Motorcycle Sales

IMPORTED BRITISH MOTORCYCLES

Royal Enfield Model G 346 C.C.

PARTS FOR ALL MAKES

Polaroid motorcycle goggles with eight extra lenses \$7.99 values

Now only \$2.50

Genuine army flying corps leather shearing flying helmet (new)

\$2.00

See us for your motorcycling needs.

Across from Bank Josephine

Phone 4062

Earl's Motorcycle Sales

IMPORTED BRITISH MOTORCYCLES

Royal Enfield Model G 346 C.C.

PARTS FOR ALL MAKES

Polaroid motorcycle goggles with eight extra lenses \$7.99 values

Now only \$2.50

Genuine army flying corps leather shearing flying helmet (new)

\$2.00

See us for your motorcycling needs.

Across from Bank Josephine

Phone 4062

DR. T. E. WALDEN

EYES EXAMINED
GLASSES PRESCRIBED
EVERY WEDNESDAY

HOURS 1 p.m. to 7 p.m.
OVER COX DEPT. STORE

PHONE 4402
PRESTONSBURG, KY.



THERE'S NO PLACE LIKE HOME!

(That goes for Ford Service, too!)

For check-ups, for lubrication, for any service needs, Genuine Ford Service gives you four important advantages:

1. FORD-TRAINED MECHANICS—who know your Ford best
2. FACTORY-APPROVED METHODS—for a better, faster job
3. SPECIAL FORD EQUIPMENT—for a job done right
4. GENUINE FORD PARTS—fit right, made right, last longer.

And here's a time-saving Ford Extra: On all jobs, we'll give you immediate service. Try Genuine Ford Service. We're sure you'll agree...



COOLEY MOTOR COMPANY

PRESTONSBURG, KY.

FIELD SEEDS

For Spring sowing
Oats, Korean Lespedeza, Timothy, Red Top, Orchard Grass, Red Clover, Alfalfa. All seeds of high quality and tested.

HARDWARE

Featuring
Quality and Reasonable Prices
Buy your plow repairs and points early—our stock is limited. We have a supply of Syracuse, South Bend, Chattanooga and Avery repair parts and points.

BULK GARDEN SEED

The right kind at the right price. We have the Early Cream colored bunch beans, white half-runners, pole and bush beans and others. Quality seeds—see our prices before buying.

PLUMBING SUPPLIES

House-wiring materials

MILL SUPPLIES

All sizes in belting. Smooth hardwood saws

OWENSBORO WAGONS

1-and 2-horse—also—Rubber-tired Trailers

WALLPAPER

NEW PATTERNS IN STOCK
We are dealers for the Imperial Washable Wallpaper
See our 1947 Samples

WINDOW SHADES CUT TO MEASURE

JUST ARRIVED—Shipment of Window Glass All Sizes

WE ARE DEALERS IN ELECTRICAL APPLIANCES
Serval Refrigerators, Norge Refrigerators, Washers and Stoves.

JUST ARRIVED

One carload of CERTAIN-TEED ROOFING

MINE SUPPLIES

To serve needs of any mine, large or small.

Sherwin-Williams

PAINTS FOR EVERY PURPOSE

Meade Bros. Hardware

See our store for your farm supplies. See our prices—and buy where your business is appreciated.
Phone 3591 Next to Greenwade Garage
Prestonsburg, Ky.

THE BANK JOSEPHINE

Capital Surplus \$150,000—ESTABLISHED 1891
Prestonsburg, Ky.
COURTEOUS, RELIABLE, PROGRESSIVE, SECURE

TUMBL-TOGS
FOR BOYS 2 to 6 FOR TUDGERS 2 to 6 FOR GIRLS 2 to 6

A. W. COX
DEPT. STORE
PRESTONSBURG, KY.

WANT-ADS

FOR SALE—now available 5-string banjo Gibson, Wabash, Ky. and Regal Guitars, Mandolins and BROWN'S PIANO STORE, Prestonsburg, Ky. E. B. Brown, Owner. Phone 5423. 2-20-47.

WANTED—used furniture. Will pay cash. RAY HOWARD, Phone 5022. City. 2-28-47.

I WILL PAY CASH for your old sewing machines. Singers preferred. M. D. HUBBARD, Box 263, Paintsville, Ky. 5-1-47.

SHOE SHINE and New Stands at Bus Station, Prestonsburg. All kinds of magazines and newspapers. EMMETT FREEMAN, Elm-Morris. 5-15-47.

DR. EARL T. ARNETT
DENTIST
Halstead Drug Bldg.
PRESTONSBURG, KY.
X-RAY Telephone 5801
Residence Phone 6891

Your one-dress wardrobe



Classic Lady
BY
CONSTANTINE

Designed with you in view, CLASSIC LADY with lots of dots... that keeps you slim and trim... proportioned to fit without costly alterations. Pretty button front, short cuffed sleeves, full-flared skirt, roomy shoulders and action back. Sheer Rayon in Navy, Blue, Aqua and Grey.

Sizes 16 1/2 to 26 1/2

7.98

- 8x10s Cannon Sheets.....\$2.98
- Pillow Cases, Cannon, each.....60c
- Regina 8x9s and 8x10s Cottage Curtains, special at.....\$2.98 and \$1.98
- Bath Towels, size 22x16, white, regular 98c value, special.....79c
- Curtain Materials, asst. colors, good quality, values, per yd.....39c, 49c, 59c
- Ladies' Purses, \$5.90 and \$5.95, Special.....\$2.98-\$3.98
- Baby Blue Miniature Chocolates, asst. per lb.....98c
- Drapery Materials.....59c to \$1.25
- Girls' Blue Jeans, size 8 to 16.....\$2.98
- Ladies' Play Shoes, asst. colors.....\$2.98
- Red Swan Knit Slips and Gowns.....\$2.50 and \$3.98
- Red Swan Pantie Briefs and Band Style.....98c

A. W. Cox
DEPARTMENT STORE
PRESTONSBURG'S HOME OF LOWER PRICES

LUMBER

Rough or Dressed

HOUSE PATTERNS OUR SPECIALTY

Let us make a free estimate of the cost of lumber for your new house, garage or store building.

MINE AND INDUSTRIAL LUMBER AND HEAVY TIMBERS

CLARK LUMBER CO.

Mill Located on Buffalo Creek Phone Prestonsburg 4821 after 7 p.m.

PIKE SAND CO., Pikeville, Ky.
Producers of washed sand, mortar sand, plaster sand, concrete sand, mason sand. See HERBERT PHIPPS, Pikeville, Ky., or Phone 980, Pikeville. 4-24-47.

FOR SALE—shoe shop, fully equipped, located at Martin, Ky. ALPHONSO MC CLOUD, JR., Martin, Ky. 5-15-47-pd.

FOR SALE—shoe shop, a bargain. Machinery has been used very little and is in first class shape. Shop is in operation and doing good business. See me at my home any time between 9 a.m. and 2 p.m.—SAM RECTOR, Garrett, Ky. 5-1-47.

FOR SALE—120-acre farm located in Washington county, Indiana. 80 acres timber, 2 houses, good barn. Plenty of good water, two cows and two horses. Price reasonable. JOHN LEWELLYN, R. 2, Pekin, Ind. 5-1-47.

FRUIT TREES, berries, flowers, shrubs, roses. Booking orders now for fall planting. BOX 5, Prestonsburg, or Phone 4744. 5-1-47.

FOR SALE—Husman meat counter, meat block and slicer. In fair condition. See MRS. WILLIS CONLEY, Garrett, Ky. 5-18-47-pd.

FOR SALE—one store located at the mouth of Brandy Ky Creek. General merchandise and stock with 10 per cent discount on entire stock of merchandise. Also Gulf filling station and postoffice. One of the best locations on Big Sandy river. Reason for sale, poor health. C. F. COON, Lancer, Ky. 5-1-47-pd.

LARGE STOCK motor boats, accessories. FRASHER, M. A. R. I. N. R. SALER, 540 31st St., Phone 4411 Huntington, W. Va. 5-1-47.

OSCAR R. SEILER—piano tuning and repairing. 30 years' experience. All work guaranteed. Box 66, Portsmouth, O. 5-1-47.

FOR SALE—5-room house with bath, large basement, gas, electricity, on 50x100-foot lot on Carter avenue. Good garage. See MRS. S. E. ALLEN, Phone 5301, City. 5-8-47.

FOR SALE OR TRADE—1442 1 1/2-ton army truck. Good condition, good tires. See or write CLEO AKERS, David, Ky. 5-8-47-pd.

FARM FOR SALE on Bull Creek. Plenty of timber, 2 dwelling houses. Plenty bottom land. See J. D. RATLIFF, Lancer, Ky. 5-8-47-pd.

FOR SALE—at Mare Creek, near Betsy Layne, newly built 4-room house with bath, hardwood floors, near churches, schools, and hourly bus service to Pikeville and Prestonsburg. Gas and electricity installed. Must see to appreciate. Priced to sell at \$2,800. Terms can be arranged. See BILL STEPHENS, Ivel, Ky., or RUFUS WALLACE, Mare Creek, Ky., or write EVERETT STEPHENS, 170 E. Pratt St., Baltimore 2, Md. 5-8-47.

FOR SALE—house and 3 lots at Lancer. Good clatern and out-buildings. Lots extend back to river. Priced right for quick sale. C. J. HYDEN, West Prestonsburg. 5-8-47.

NEW TRUCK FOR SALE—new 2-ton Ford, cab over engine; 134-inch wheelbase. See S. E. CAUDILL, Betsy Layne, Ky. 5-8-47.

NEW AND USED ARMY TRUCKS for sale: ideal for lumber, coal, gas field and general work. Also winches, dump bodies and parts. R. D. BLEDOE MOTOR CO., Piedmont at Camden Rd., Huntington, W. Va. Phone 2722. 5-8-47.

FOR SALE—300 acres of fine blue-grass land, some good bottom land, fenced, well watered, two good dwellings, three tenant houses, electricity. \$15,000 each or terms. REV. C. H. PETERS, owner, Rush, Ky. 5-8-31-pd.

WANTED—man with car for full time business in North Knott county. 2,000 families. Products sold 25 years. Run your own permanent business. Household Medicines, Food Products, Extracts, Farmers' Supplies. Big line. Good profits. Write for particulars to RAWLEIGH, Dept. KYD-213-194A, Preppert, Ill., or see Ed Howard, Garrett, Ky. 5-8-31-pd.

FOR SALE—upright piano, good condition. See or write SOL SAMMONS, Emma, Ky. 1-8-47-pd.

LADIES—Easy to earn \$5 to \$10 daily taking orders for new Spring Line Mainonette Dresses. For sales samples, write P. O. Box 501, Cincinnati 1, Ohio. 5-9-47.

FOR SALE—3-room house on 230x111-foot lot at Lancer. See FANNY THOMPSON, Lancer, Ky. 5-15-47-pd.

FOR SALE—good three-room house and lot at Bull, 800. Mrs. BALLARD CONNORS, Ivel, Ky. 11.

FOR SALE—Husman meat counter. In fair condition. See MRS. WILLIS CONLEY, Garrett, Ky.

FOR RENT—drycleaning and pressing equipment. See DAVE STEPHENS, Prestonsburg. 5-15-47.

PIANO TUNING—and repairing, 30 years' experience. Ask your music teacher or write OSCAR R. SEILER, care Howard Hotel, Paintsville, Ky. 5-15-47-pd.

FOR SALE—large new cash register. JIM DANIELS, Lacey, Ky. 5-1-47-pd.

FOR SALE—drug store, consisting of stock, furniture and fixtures. All new. Located at Martin, Ky. Offered at a real bargain, either for cash or on monthly payment plan. A real money maker. See or write HENRY STEPHENS, JR., Box 507, Prestonsburg, Ky. 5-15-47.

FOR SALE—four-room house on lot 63x209 at mouth of Cow Creek on highway. Gas and electricity. See EARL PRATER at property. 5-15-47-pd.

FOR SALE—3-room house on lot 50x100 ft. Located in Austin, Ky. Electricity in house. See HENRY BURKE at Nunmy's Store, Prestonsburg, Ky. 5-15-47-pd.

FOR SALE—1942 G.M.C. 10-wheel G.I. truck. Good condition, good rubber. License and weight tax paid. See JIM DANIELS, Lacey, Ky. 5-15-47-pd.

FOR SALE—yellow locust posts. Any size. Choice or select quality, round or split. Per delivery prices, write or see S. H. KEBEL, David, Ky.

Eastman Kodak color film, all sizes—Hutinspiller Drug, Prestonsburg.

EASTMAN KODAK color film, all sizes. HUTINSPIILLER DRUG, Prestonsburg.

FOR SALE 3 1/2 acres near Ivel, Ky. 6-room house, water piped in house, good barn, outbuildings, young orchard, new wire fencing. See EVA CRISP, Hite, Ky., or MAUDE HENJEY, Prestonsburg, Ky. 5-15-47.

FOR SALE—2000 ft. poplar lumber seasoned four years. OSCAR RICHARDSON, West Prestonsburg. 11-pd.

GOVERNMENT SURPLUS—khaki shirts, 75c to \$1; khaki pants, same as new. \$1.98; G.I. patch pocket pants, \$1.25; G.I. coveralls, \$4.75; ladies' new overalls, \$2.25; ladies' ex-fords, \$2.25; ladies' white loafers, \$2.49. Everything going at reduced prices. See MILLER'S STORE, Third street, Prestonsburg. 5-15-47-pd.

IN STOCK—Original Briggs & Stratton washing machine engine parts. PRESTONSBURG ELECTRIC CO., third ave., Prestonsburg. 5-27-47.

5
(Continued from Page 1)

Box score of Sunday's game:
Prestonsburg AB R H E
Doug Butcher, 2b.....5 7 3 1
Maede, c.....4 6 3 0
Paul Butcher, ss.....8 3 4 1
Brewer, 3b.....4 3 0 1
D. Ross, ss.....3 1 1 0
Clifton, cf.....3 2 0 0
Blackburn, rf.....4 2 2 1
May, lb.....6 5 0 0
Miller, 3b.....8 4 3 1
Patton, p.....3 2 0 0
Lockwood, p.....3 1 0 0
Totals.....38 49 31 4

Next Sunday, Prestonsburg goes to Wheelwright. Big test of the young season for Prestonsburg comes on the following Sunday when Pikeville comes here.

Box score of Sunday's game:
Prestonsburg AB R H E
Doug Butcher, 2b.....5 7 3 1
Maede, c.....4 6 3 0
Paul Butcher, ss.....8 3 4 1
Brewer, 3b.....4 3 0 1
D. Ross, ss.....3 1 1 0
Clifton, cf.....3 2 0 0
Blackburn, rf.....4 2 2 1
May, lb.....6 5 0 0
Miller, 3b.....8 4 3 1
Patton, p.....3 2 0 0
Lockwood, p.....3 1 0 0
Totals.....38 49 31 4

Allas AB R H E
Marx, 1b.....5 0 0 0
Williamson, c.....5 0 0 0
Sellers, 2b.....5 0 0 0
Morgan, cf.....5 3 3 1
May, lb.....5 1 5 0
D. Ross, ss.....3 1 1 0
Combs, lf.....1 0 0 0
Stidham, lf.....2 0 0 0
Simms, 2b-p.....1 0 0 0
A. Ross, p.....1 0 0 0
Bowling, rf.....1 0 0 0
Lockwood, p.....0 0 0 0
Speaks, p-1f.....2 0 0 0
Totals.....28 6 10 8

Summary: Two-base hit—Doug Butcher 2, P. Butcher 3, Ross 1, Danny Butcher. Three-base hit—Danny Butcher, May, Miller, Lockwood. Runs batted in—P. Butcher 6, Doug Butcher 5, Miller 5, Ross 4, Maede 4, Danny Butcher 3, May 2, Patton 3, Blackburn, Lockwood, Brewer 2, Ross. Bases on balls—off Patton 3, off Lockwood 1, off Jackson 4, off Speaks 2, off Simms 4. Struck out by Patton 5, by Lockwood 1, by Patton 1, by Speaks 2, by Simms 1. Stolen bases—Maede 4, Blackburn 3, Doug Butcher 2, P. Butcher, May, Miller.

In Boyd county, 101 4-H club boys are enrolled in the dairy project.

Western Auto Renews Its Big Bass Contest

The bass contest sponsored by Western Auto Stores in the 35 states where their stores operate was announced this week as starting today (Thursday) and continuing till Sept. 30, after a five-year wartime vacation.

First, second, third, fourth and fifth prizes totaling \$10,557.50 will be awarded 175 lucky fishermen. The contest is restricted to fresh water large and small mouth bass.

P.A.R. CHAPTER MEETS
John Graham Chapter, Daughters of the American Revolution, met Tuesday evening at the home of Mrs. H. B. Patrick. Because of the absence of a large number of members, a call meeting will be held in June. Mrs. Patrick served refreshments to Mrs. Lon S. Miles, Mrs. O. T. Stephens, Mrs. H. G. Salisbury, Jr., Mrs. Winnie F. Johns, and Mrs. M. J. Lette, Sr.

W.S.C.S. MEETS
Mrs. H. B. Patrick was hostess Tuesday evening to members of the Woman's Society of Christian Services of the Methodist Church at her home on Graham street. Mrs. Ike Lockwood, the president, presided over the business session.

Mrs. Dave Vaughan was elected vice-president. An interesting report from the district meeting, which was held recently in Ashland, was given by Mrs. Winston Ford, representing the Wesleyan Guild, and by Mrs. Green Allen. Miss Pugsley led the group in the devotional and inspiring program which followed. Mrs. Patrick served refreshments to Mesdames Dave Vaughan, C. Allen, B. P. Combs, W. E. Cartwright, Ike Lockwood, Earl A. Stumbo, Winston Ford, Miss Pugsley.

The Graydon County Farm Bureau is raising \$2,000 as a fund for a medical student.

FLOWERS
Phone 718
Norton Floral Co.
FRANK RASCH, MGR.
Pikeville, Ky.

Big Sandy Tobacco & Candy Co.
WHOLESALE
A source of candy, tobacco and other supplies for retailers of this section.

- Every known Tobacco
- Candies produced by most of the better-known manufacturers
- Cigars and Cigarettes
- Notions, etc.

Located in former Hager May Building, near Greenwald's
Phone 6182 PRESTONSBURG, KY.

Home Furnishings, Appliances & Hardware

Ranges for Every Family's Cooking

Coal Ranges

GLIDERS
with insnerspring comfort and
LAWN CHAIRS

Gas Ranges

Insulated Steel Ice Boxes
Use for camping trips and summer home. Keeps food cold 24 to 36 hours.

Kerosene Ranges

GLASSLESS, SHADOWLESS
Fluorescent Light
Improves working conditions

BICYCLES

JUST ARRIVED
Your Heart's Desire in Solid Maple

DINING ROOM SUITES

BEDROOM SUITES

LIVING ROOM SUITES

STUDIO COUCHES

END, COFFEE AND LAMP TABLES

These and many, many more bargains can be found at our store. Before you buy, see us. Remember. "You can lose by looking."

We appreciate your business, so—
When you need Home Furnishings, Appliances or Hardware, SHOP AT HOME!
EASY TERMS
PAY BY THE MONTH

Home Furniture Co.

Phone 5121
Lancer, Ky.

Owned and operated by Guy Horn and Sen. Carl

For Smart

SHOE APPEARANCE

BRING YOUR SHOES TO US. WORK DONE WHILE YOU WAIT OR SHOP.

We can give you a Complete Shoe Service. We also sell a complete line of Esquire and Cavalier shoe polish, all colors including red, blue and green. Also shoelaces.

To be convinced, give us a trial.

Halstead Shoe Shop

Court Street
Opposite Courthouse
Prestonsburg, Ky.

The Ryan Funeral Home

MARTIN, KENTUCKY

Offering efficient, friendly service at any hour.

G. D. Ryan, Sr., Jack Ryan, G. D. Ryan, Jr., licensed embalmers and undertakers

Phone 2541

DAY AND NIGHT AMBULANCE SERVICE

Flowers For Every Occasion

Prepared by experienced florists

THE RYAN FLORAL CO.

Phone 2541 MARTIN, KY.

Floyd County Times

OFFICIAL ORGAN FOR FLOYD COUNTY, KY.

Published Every Thursday by
PRESTONSBURG PUBLISHING CO.

Entered as second class matter June 18, 1927, at the
postoffice at Prestonsburg, Ky., under the act of
March 3, 1879.

AND WE'RE IN THE SIXTH!

IT IS encouraging to note that the Kentucky Highway Department and the Highway Patrol are committed to a policy of prosecuting persons guilty of dumping garbage and other refuse on state highway right-of-way.

The state's road right-of-way covers a lot of Kentucky territory that should be protected from abuse by persons who have little regard for either the state, its scenery or its inhabitants. And it is apparent that if state authority takes no action, none will be taken by any other source.

Three persons already have been fined \$15 and costs, each, at Ashland for this offense. District Highway Engineer Kenneth G. Frye has stated similar action

H. B. Patrick was a business visitor in Lexington Tuesday, returning home Wednesday.

Mrs. C. L. Hutson and Mrs. E. P. Arnold spent Sunday in Huntington.

Dr. and Mrs. Marvin Russell, Mr. and Mrs. Ben Stansifer and Mr. and Mrs. R. W. Feiler attended the funeral of Mrs. Russell's brother, Lt. Col. Lebus Johnson, in Owensboro Sunday.

HALL'S CAFE

At the Bus Station—Prestonsburg

SPECIAL FOR SUNDAY—
FRIED CHICKEN DINNER
T-BONE STEAKS AT ANY TIME

TO THE PUBLIC:

I am back in my old location where I hope to meet all my old customers and many new ones. We will try to serve you at all times the best food and to do this courteously. Come in and see us.

J. M. HALL



Doris Dodson's "Snow White" is first choice for graduation and summer parties. Spotless white Fine Wale Pique with lace sprays at the neckline, gay double ruffles at each hip and widely flaring skirt. Sizes 7 to 15. \$9.95.

THE LEADER
PRESTONSBURG, KY.

will be taken throughout the Sixth district.
For which reason The Times is glad Floyd county is in the Sixth district.

GIVE THEM CREDIT

THOSE who carry a chip on their shoulder for every industrialist are especially invited to consider the work the Princess Elkhorn Coal Company and the Inland Steel Company are doing as freewill contributions to the future of Floyd and adjoining counties.

We refer, in particular, to the investments these two companies are making in the education of young women and men of this section. Nobody asked them to set up scholarship funds to provide college educations for these youngsters. It was their idea, this investment. It is evident that the men with authority in the two firms believe in Eastern Kentucky and its youth and that they value the present and future of both above mere cash in the treasury.

You say, anybody with the resources of these companies could do as much as they? They could, but few do. Some firms with equal or greater financial strength do little or nothing that does not directly benefit them, even as a large percentage of individuals do.

It is a splendid thing Inland Steel, the veteran, and Princess Elkhorn, a comparative newcomer to this section, are doing. Give them full credit.

Inland Scholarship Students Are Cited At U.K. Honors Day

Nearly 600 outstanding University of Kentucky students, representing virtually every county in the state, were cited Wednesday for academic achievements, named winners of the special awards and prizes on the basis of leadership, and announced as members of campus honor societies in the third observance of Honors Day at the University.

Dr. Raymond F. McLean, president of Transylvania College, addressed the special convocation called to honor the students on the subject, "The Fruit of the Tree." U.K. President Herman L. Donovan presided and Dr. Leo M. Chamberlain, vice-president of the University, recognized the honor groups.

Included in the honor citations was: Inland Steel Company scholarships of two \$400 awards to high school graduates of Floyd, Knott and Pike counties on the basis of competitive examinations to L. C. McClellan, Jr., Martin, and Edward L. Maggard, Hindman.

TIMES WANT ADS PAY

REMINDERS FROM PARTY LINERS

RELEASE THE LINE IN EMERGENCIES

* If your neighbor has an emergency call give up the line quickly.

Party-Line Courtesy is Catching

SOUTHERN BELL TELEPHONE AND TELEGRAPH COMPANY, INCORPORATED

Don't read this unless you think it makes a difference where you live

If you are interested in making money, you should live where business is always good. If you are interested in education, you should live in a good educational center. If you are interested in taking it EASY you should live in beautiful surroundings where there is variety and entertainment. It is no SECRET that Lexington is the idea place. Why not let us help you get located at the right spot?

MOORE & MOORE REALTY AND AUCTIONS

134 W. Short St. Lexington, KY. Phone 6615
Chas. Moore Joe Moore
Res. Phone Shelby 3211-Y Res. Phone 3074-X

PERSONALS

Alvin Taylor was a business visitor in Louisville, the first of the week.

Mrs. Jo M. Davidson and Mrs. Everett H. Sowards are in Ashland, guests of Mr. and Mrs. H. L. Lay and Mr. and Mrs. John E. Layne. Mr. and Mrs. Cecil Kendrick, Mr. and Mrs. Floyd Harris and children, Mr. and Mrs. Bascom Harris and children, Mr. and Mrs. John D. Collins, Mr. and Mrs. E. J. Conn and children enjoyed a family dinner Sunday with Mr. and Mrs. J. Q. Harris, Jr., at Landon.

Chester Meade, who has been receiving medical treatment in Louisville for several months, is spending the week here with his family. His condition is much improved.

Mrs. Norman Martin returned last week from a vacation spent in Virginia.

Mr. and Mrs. Eugene Kelly visited his mother, Mrs. Mary Kelly, on Mother's Day at the home of Mr. and Mrs. Harold Breminger. Another son, Arnold Kelly, of the Vocational School, Paintsville, also visited here.

Mrs. Harold Breminger and mother, Mrs. Mary Kelly, accompanied Mr. and Mrs. Eugene Hager to Wheelwright where they attended services at the Freewill Baptist Church Sunday night.

Mrs. Sam Wells, at her Eighth street residence, received last week a new Cable Console Spinet Piano, purchased from Brown's Piano Store, Prestonsburg, E. B. Brown, owner, Phone 5492.

Bill Darby, of The Times force, was a visitor here Wednesday after spending the last four months in Veterans hospital, Huntington, W. Va. Mr. Darby is now at his home near Emma and expects to return to work here about June 1.

Danville, Boyle county, again is making available a 7½-acre plot as a city garden project.

Approximately 1,600 cows have been signed up in the artificial breeding program in Graves county.

PERSONALS

songs reserved for special events, baptismal tunes, funeralizing tunes, foot-washing ballads, the latter two strange names to us, for it is only among our mountain people that these ritual scraps of the primitive church have survived. One of the foot-washing songs that will be treated at the Festival is "When Jesus Christ Was Here Below."

When Jesus Christ was here below, He taught His people ways to do, And if we would His precepts keep, We must descend to washing feet."

The Chanters have never received a fee for their singing. But they are becoming famous. They appeared in programs at the World's Fair in New York City. Most of them had never been further than Leasville and some had not gone beyond Prestonsburg. New York City overpowered them. One added to be baptized before going up to the top of the Empire State Building.

But when they sang in the Temple of Religion at the Fair, their names were on the list of those who were the songs they had always sung. "You've Got To Walk That 'Lonesome Valley," carried them back to their Kentucky hill homes and it was the audience which was moved, not the Chanters.

When they appeared on the program at the National Folk Festival at Washington, Congressman Andrew J. May, of Prestonsburg, took the group to a night club dinner. During the floor show the Chanters stood up to get a better look. Sakes-a-mighty! Such carrying-on!

When it came time to start to the Festival at Washington, one of the Chanters who lives up Eastway 12 miles distant from Prestonsburg, had not shown up. There was no telephone and not much of a road. It was raining and the night was black as root. Hours passed and dawn was near. They were to start by bus early that morning. Mrs. James was standing watching the road from a window. Down the road a light was bobbing. It was the missing Chanter slushing along with

his coal-oil lantern in his hand. When we listen to them as they sing at the National Folk Festival, we are reminded of the endless day.

Dark and thorny was the desert. Through which pilgrims make their way. Yet beyond this vale of sorrow Lies the fields of endless day.

In remembrance we shall see the Chanters summoned against the Kentucky hills one Sabbath morning when the dogwood was in bloom.

Deputy Sheriff Harold Conn and Chief of Police Epp Lafayette Debus Sunday to return Charlie Debus from Orlando, Fla., for trial on a breaking and entering charge.

Mrs. George Colson, of Mt. Sterling, was the guest, the latter part of the week, of Mrs. R. W. Feiler and Mrs. Feiler.

I. O. O. F., No. 293

PRESTONSBURG LODGE
First degree—first Thursday;
second degree—third Thursday;
initiation degree—fourth Thursday.
WILLIAM MOORE, N.G.
WILLIAM KIRK GUNNEL, V.G.
J. M. PARSLEY, Chaplain
EDWARD MAY, Treasurer
L. V. GOBLE, Secretary
TOM JAMES, Fin. Secretary

THE Arnold Funeral Home

E. P. ARNOLD, General Manager
FRANKLIN W. MOORE, Managing Director
BRADY SHEPHERD, Assistant
JOHN C. HALL, Assistant

There comes a time in the life of every family when sympathy and understanding service mean a great deal to relatives and friends of one deceased.

We stand ready at all times to render service in time of need—a service that not only is complete but reasonable.

Prompt, Efficient Ambulance Service

Flowers for All Occasions

The Arnold Funeral Home

The Phone numbers are: Day—4181, 4341, 4611 Night—5531

RUPTURED?
COMING AGAIN TO PRESTONSBURG

See the New
Reid Truss

1. No Straps or Belts
2. Button Cup Pad
3. Holds Like Your Three Middle Fingers
4. Fitted By An Expert
Declares State H. the Best They Have Ever Seen
AUXILIER HOUR, THURSDAY, MAY 22
MEN, WOMEN AND CHILDREN
Ask for Mr. Reid Also Abdominal Supporters
KENTUCKY TRUSS SERVICE, Anchorage, Ky.

Cash Special Clearance Sale At GILLESPIE'S

For the next thirty days we will give 10 to 30 percent discount on our entire line of furniture. For example—

| | |
|---|----------|
| BEDROOM SUITES that were \$325, reduced to | \$225.00 |
| BEDROOM SUITES that were \$275, reduced to | \$215.00 |
| BEDROOM SUITES that were \$249.50, reduced to | \$199.50 |
| BEDROOM SUITES that were \$229.50, reduced to | \$189.50 |
| BEDROOM SUITES that were \$210, reduced to | \$179.50 |
| BEDROOM SUITES that were \$179.50, reduced to | \$139.50 |
| BEDROOM SUITES that were \$97.50, reduced to | \$79.50 |
| LIVING ROOM SUITES that were \$249.50, reduced to | \$199.50 |
| LIVING ROOM SUITES that were \$215, reduced to | \$185.00 |
| LIVING ROOM SUITES that were \$198.50, reduced to | \$169.50 |
| SOLID 9-PC. MAHOGANY DINING ROOM SUITES that were \$450, reduced to | \$349.50 |
| SOLID 8-PC. OAK DINING ROOM SUITES that were \$225, reduced to | \$179.50 |

Everything else in accordance. If you need anything in Furniture it will save you money to buy from us. These prices will be for cash only. Many items are less than cost to us.

Gillespie Furniture Co.
Phone 4242 Next to Bank Josephine Prestonsburg

DR. R. H. MESSER
DENTIST
X-Ray Equipment
Curtain, Kentucky
Phone Wayland 24

Mr. and Mrs. J. D. Clarke accompanied Mrs. W. F. Clarke and daughter, Judy, to Paducah where they were joined by Dr. William F. Clarke. Dr. and Mrs. Clarke were en route to Springfield, Mo., where he will be on the staff of a Veterans hospital.

Wright Scores Four Runs in 11th For 9 to 5 Victory

Wheelwright scored four times in the top of the 11th to defeat Ekborn City 9 to 5, Sunday. Wheelwright players hit for a total of 18 safeties. Lyons homered in the top of the third with no one on.

Wheelwright plays Prestonsburg at home next Sunday for the first game of the season on the home field.

| Box score: | AB | H | R | E |
|---------------|-----------|-----------|----------|----------|
| Wheelwright | 7 | 1 | 0 | 0 |
| Edwards, cf. | 7 | 1 | 0 | 0 |
| Bauch, ss. | 7 | 3 | 0 | 0 |
| Lyons, c. | 7 | 2 | 1 | 0 |
| Ratcliff, 1b. | 6 | 1 | 1 | 0 |
| Litafski, lf. | 5 | 2 | 1 | 0 |
| Baker, rf. | 3 | 2 | 1 | 0 |
| Dorndick, 3b. | 3 | 2 | 1 | 0 |
| Little, 2b. | 5 | 2 | 2 | 0 |
| Wohlford, p. | 6 | 3 | 1 | 0 |
| Totals | 51 | 18 | 9 | 0 |

| Ekborn City | AB | H | R | E |
|----------------|-----------|-----------|----------|----------|
| Powell, lf. | 3 | 2 | 1 | 0 |
| Deskins, 2b. | 4 | 1 | 0 | 0 |
| Vanhoose, ss. | 5 | 0 | 0 | 0 |
| Potter, 3b. | 5 | 3 | 2 | 0 |
| Sanders, c. | 1 | 0 | 0 | 0 |
| Seiler, cf. | 5 | 1 | 0 | 0 |
| Moore, rf. | 4 | 1 | 1 | 0 |
| Ratcliff, 1b. | 2 | 1 | 0 | 0 |
| Stapleton, 1b. | 3 | 0 | 0 | 0 |
| Ratcliff, 1b. | 2 | 1 | 0 | 0 |
| Williams, p. | 2 | 0 | 0 | 0 |
| Ramey, p. | 2 | 1 | 0 | 0 |
| Totals | 42 | 11 | 5 | 0 |

(Continued from Page 1)

Seniors who entered the examination here Saturday for Inland Steel scholarships were Charles Tackett, Prestonsburg, Eddie Craft, Wayland, Glen Martin, Betsy Layne, Mary Osborne, Wheelwright, Vernon Stephens, Garrett, Clifford Martin, Martin, William Hubbard, Auxier, and Bill Frances Jarrell, Maytown.

To take the tests here Saturday for the Pikeville College scholarship will be Mary Bollins Martin, Wayland, Geneva Prater, Maytown, Dorothy Reed, Betsy Layne, Kiren Hopson, Auxier, Mary K. Prater, Prestonsburg, and Mary Westfall, Martin.

Bennett's prices down!



New Lower Prices on
● Prize Recipe Mayonnaise
● New Recipe Salad Dressing
● New Recipe Sandwich Spread
● New Recipe Prune Juice
PREMIUM QUALITY—HIGH AS EVER!

Dr. A. E. Quinlan, Jr.
Dentist
Phone 10-Y Wayland, Ky.

TIDBITS OF KENTUCKY FOLKLORE

By GORDON WILSON, Ph.D.
Western Kentucky Teachers' College Bowling Green, Ky.

THE PATH

WE hear little about paths now, especially since roads have become better and cars can take us "over the hills and far away." There was a time when paths were one of our chief means of getting anywhere. The roads themselves were little more than trails and were muddy in winter and dusty in summer. Besides, roads were relatively few in number, and we needed to cut across fields and woods when we started anywhere and did not want to exhaust ourselves merely by walking.

The path I remember best was the school path. We went up through one of our fields, by the tobacco barn, climbed the fence, and then set out through a half-mile of woods to the schoolhouse. Every day along this path was an adventure, for the trees, the wild flowers, the birds and the four-footed creatures were a part of that half-mile. The path was in no sense a direct line; it wobbled up through the woods, over the crest of a small divide, down another slant, across a brook, and finally up the last hill to the one-room schoolhouse. In the brook, or branch, were bright pebbles, good for sling-shots and also good to take to school to learn how to count. Along the path grew hickory and pawpaw, which make the best whistles and bark whips in the world. And the path had two branch paths that brought many other children, from further up the creek. Child love affairs and jealousies or even feuds often made the path as representative of human faults as great water courses or caravan routes of olden times.

Another path led across the field to our second-nearest neighbor's. Sometimes this path was plowed up, when the field was in corn or tobacco, and we had to find our way through the growing plants. By harvest time the path was always hard-patted-down and looked as if it had not been disturbed by the plow. Part of this path led across another small branch where many plants grew, and where frogs croaked in spring and quacking ice spicules formed in winter. In this little branch bottom we found tracks of wild animals in the mud in summer or in the snow in winter, showing that the wildest creatures imaginable came almost to our very doors in their nightly prowling. Sometimes this little hollow could be mighty dark when we had been to spend the afternoon at Mr. Bob's and had stayed rather late. An occasional owl would greet us there and make our hair stand on end. Part of this was a sort of primitive fear that all of us had for anything in the wild; part of it was symbolical of the parental scolding that we expected when we had got home, because of our staying over time.

A path I very much liked wound around the hills to the home of my best boy friend. It started out from the school path just beyond the tobacco barn and looped around the hills, sometimes in the woods, sometimes at the edge of the fields. At one place it touched the bank of the creek, where the stream had washed out a cut in the edge of the hill. There was where I used to find the eels in spring, building their nests in the cold, clear water on the gravelly shallows. The hills by the path seemed tall, but now I know they were only steep. On their tops were hundreds of chestnut trees, always inviting in October after frosts had loosened the nuts from the burs. Again there was a chance of seeing wild creatures right in their own haunts, unforgettable glimpses of impressive facts about nature. I love the memory of that path because it was the one along which I walked when I first found the writings of Henry David Thoreau, in a book that my friend's sister had lent me. She was a school teacher and had lots of books, lots so far as our little world was concerned. In one of these I read as I went home late one Sunday afternoon the vivid account of the battle of the ants, which Thoreau witnessed as he lived at Walden Pond. Henceforth that range of hills became for me the very ones that surround Walden. And the little old path, long in disuse, was a way out to strange lands beyond the hills, lands perennially new because touched by the pens of writers who know no death.

ARE YOU ABOVE THE AVERAGE?

The average family owns \$850 in Government Bonds, has \$550 tucked away in the bank for the future, and \$350 in a bank account for current use.

Bolster your thrift program (—open an account here.)

THE FIRST NATIONAL BANK
PRESTONSBURG, KY.

HERE'S WHY IT PAYS To Buy Insurance From

LAYNE & LAYNE
YOU get more than a fire or casualty insurance policy when you buy from this agency. In addition, you obtain the lifetime services of a trained professional man—skilled in protecting business and the individual. You make a friend who will represent your interests in the settling of a claim. You meet a neighbor, familiar with the problems of your community, who gives guidance to your personal and business acquaintances. And you obtain the peace of mind that comes with a well-planned insurance program. That's why it pays to buy insurance through...

LAYNE & LAYNE
Prestonsburg, Ky. Telephone No. 5901

Cats Find Bulldogs Easy Diamond Mark Here Last Saturday

The Prestonsburg Black Cat baseball team scored almost at will here Saturday afternoon to defeat the Hazard Bulldogs, 20 to 3, with the visitors held to three hits by Harmon, Black Cat right-hander. Prestonsburg scored in every inning but the sixth.

Burchett headed the winners' attack with a double and two singles in three times at the plate. The box score:

| Prestonsburg | AB | H | R | E |
|-----------------|-----------|-----------|-----------|----------|
| Garber, 3b.-lf. | 3 | 3 | 1 | 0 |
| Laferty, lf. | 0 | 0 | 0 | 0 |
| Mayo, lf. | 3 | 1 | 0 | 0 |
| Goble, rf. | 3 | 3 | 2 | 0 |
| Porter, 1b. | 2 | 3 | 1 | 0 |
| Blackburn, cf. | 3 | 1 | 1 | 0 |
| Brannan, c. | 5 | 2 | 1 | 0 |
| Spradlin, c. | 1 | 0 | 0 | 0 |
| Burchett, 2b. | 4 | 2 | 3 | 0 |
| Willis, 2b. | 0 | 0 | 0 | 0 |
| Children, 2b. | 3 | 2 | 1 | 0 |
| Allen, lf. | 1 | 1 | 1 | 1 |
| Burkert, ss. | 3 | 1 | 0 | 0 |
| Harmon, p. | 3 | 1 | 1 | 0 |
| Totals | 38 | 29 | 12 | 0 |

| Hazard | AB | H | R | E |
|-----------------|-----------|----------|----------|----------|
| Maloney, p. | 3 | 1 | 1 | 0 |
| O. McGuire, 2b. | 4 | 0 | 0 | 0 |
| Strong, ss. | 4 | 1 | 0 | 0 |
| McGuire, 3b. | 3 | 0 | 1 | 0 |
| Furner, 1b. | 3 | 0 | 0 | 0 |
| Sidham, cf. | 2 | 0 | 0 | 0 |
| Ross, c. | 3 | 1 | 1 | 0 |
| Claco, cf. | 3 | 0 | 0 | 0 |
| Haynes, rf. | 3 | 0 | 0 | 0 |
| Manis, x | 1 | 0 | 0 | 0 |
| Totals | 38 | 3 | 3 | 0 |

Summary: Two-base hit—Burchett, Three-base hit—Porter. Runs on balls—off Harmon, 2; off Maloney, 5. Struck out—by Harmon, 3; by Maloney, 4; by McGuire, 2.



New EVERSHARP CA REPEATER PEN
In striking smart combination of 10-carbon ballpoint, ball and extra-fine ballpoint steel barrel.
NO CAP! Point "Clicks" in and out with your thumb!
No other pen can compare! It rolls the CA ink on dry! Writes up to 3 years without refilling. You refill it yourself with a cartridge!
HUTSINPILLER DRUG
Prestonsburg, Ky.

Is your car getting old and rundown? Does it need a spring tonic?

Does your motor need new steaming? Do your fenders need straightening up? Do your brakes need re-lining? Does your motor need tuning up? Do you need a good lube job? Do you need a good wash job? Our expert mechanics can put new life in your car!

We also carry a full line of parts and accessories: Firestone tires, 6-00x16, \$15.95 6-50x16, \$18.95. Ashland Products gasoline, ethyl, 25c per gallon; regular, 23c. One cent less per gallon for trucks. (Tax included.)

Boone Motor Co.

Just Back of Stockyards
ALLEN, KY
Wrecker Service, day or night
Phone 2492
WHOLESALE PRICES ON PARTS TO GARAGES

Young Washers

Sold on a guarantee of satisfaction
CASH OR CREDIT

Also looking for a shipment of

ADMIRAL ELECTRIC REFRIGERATORS

the first of next week.

Gillespie Furniture Company

PRESTONSBURG, KY.

Summer School PIKEVILLE JUNIOR COLLEGE

Begins June 9, 1947

| FIRST TERM | SECOND TERM |
|----------------|-----------------|
| June 9-July 12 | July 14-Aug. 16 |

All work approved by the Government for Veteran Training. Pikeville College is fully accredited by the Southern Association of Colleges and Secondary Schools and by all other accrediting agencies for junior colleges operating in this area.

COURSES WILL BE OFFERED IN THE FOLLOWING FIELDS:

| | |
|---|---|
| ART BIBLE CHEMISTRY EDUCATION ENGLISH GEOGRAPHY HISTORY | HYGIENE MATHEMATICS MUSIC PLAYS AND GAMES PSYCHOLOGY TYPEWRITING |
|---|---|

Those who wish to study toward a diploma in any of the College's eight courses—Teachers, General, Scientific, Pre-Medical or Pre-Dental, Pre-Law, Home Economics, or Commercial—will find work suited to their needs.

FOR MORE INFORMATION, CALL OR WRITE

President A. A. Page,
Pikeville College
PIKEVILLE, KENTUCKY

OPEN FOR BUSINESS RAMSEY'S Boarding House and Restaurant

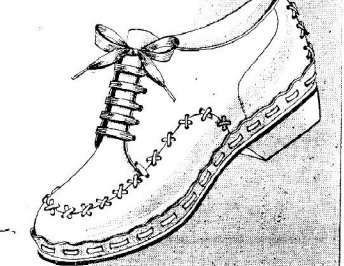
Board and meals for working men. New business just established at McDowell, Ky., opposite railroad station. Convenient to all mines and industry on Left Beaver.

MR. AND MRS. M. D. RAMSEY, Proprietors
McDOWELL, KY.

FRANK'S

"SHOE PLACE OF PIKEVILLE"
Phone 875 — 345 Main St.
Pikeville, Ky.

Mail Orders Promptly Filled State Regular Shoe Size



"DUN-DEERS" FOR WOMEN

... are back again to give you their well remembered comfort and wearing service... the comfort in brown or white... sizes 3 to 9, AA to C
\$4.98

One Stop!...

We have anything you need in

HARDWARE, FURNITURE AND HOUSEHOLD REQUIREMENTS

Our merchandise is of the highest quality and our prices are right. Why go anywhere else when at one stop you can get what you need?

Try this store first for everything in hardware.

WM. ARROWOOD HDWE. CO.

Phone 4411 Prestonsburg We Deliver

ATHLETE'S FOOT GERM HOW TO KILL IT IN ONE HOUR

IF NOT PLEASED, your 35c back. Ask your grocer for this STRONG, TE-OL, Made with 90 percent alcohol, it PENETRATES, BAKES and kills MORE germs faster. Today at HUGHES DRUG.

MARTIN THEATRE "WHERE THE CROWDS GO"

FRIDAY—
"Seven Were Saved"
Richard Dennis, Catherine Crane

SAT.—SUNDAY WESTERN—
"West to Glory"
John Dill, Hester Aves.

"Riders at Dawn"
Jimmy Wakely, Lee Lassie White.

SUNDAY—IN PERSON—
Bradley Kincaid
AND HIS GRAND OLE OPY TROUPE

Robert Linton Floyd, Bridge, Nat. Factor, Del. Hook, A three-day jamboree.
Shows will open at 11:30. First matinee will start at 12 noon.
Admission: 40c and 75c.

MONDAY—
"Easy Come, Easy Go"
Sonny Dots, Diana Lynn.

TUES.—
"Angel on My Shoulder"
Paul Muni, Anne Baxter.

WEDNESDAY—THURSDAY—
"Humoresque"
John Crawford, John Garfield.

Follow the crowd to Martin Theatre. Center Saturday—big time for everybody—old and young. Bring your Pop and Mom! Hours from 9 till 2. Music by The Sunset Serenaders. Both round and square dancing.
Admission—\$1.00 per person.

IN PERSON BRADLEY KINCAID AND HIS GRAND OLE OPY TROUPE



AT THE
MARTIN THEATRE
MARTIN, KY.
SUNDAY, MAY 18
First matinee starting at 12 noon.
Admission—40 and 75c

Wanted Used Cars

Sell Us Your Car While
Prices Are Still High

Hughes Motor Co.

Phone 2041 ALLEN, KY.

Mrs. Rebecca Hall Dies at Bevinville

Mrs. Rebecca Hall, 71 years old, wife of Buddy Hall, of Bevinville, died at her home Friday, victim of an extended illness.

She was a daughter of the late Mr. and Mrs. Dave Mullins and was a native of Pike county. Mrs. Hall was a member of the Regular Baptist Church. Surviving, besides her husband, are one son, Luke, of Bevinville, two daughters, Mrs. Dow Hall, Bevinville, and Mrs. William Hager, Weathersburg, one brother, Lee Mullins, of Drift, and one sister, Mrs. Bertha Moore, Bevinville.

Funeral rites were conducted Saturday afternoon from the residence, the Revs. Oliver Meade and Thomas Stone officiating. Burial in the family cemetery was under direction of the Ryan Funeral Home.

NOTICE TO BIDDERS

Sealed bids will be received by the undersigned up to and including Saturday, May 21, on construction of a church building at Martin, Ky. Plans and specifications may be seen at the home of C. R. Marshall, Martin, Ky. The right is reserved to reject any and all bids.

PRESTON CHAPEL
METHODIST CHURCH
By C. R. Marshall, Chm.
Bldg. Com. (Tel. 2661)
5-15-51.

FOR SALE

1941 CHEVROLET DELUXE 2-DOOR SEDAN

Radio, Heater, and Spare Tire. This car is clean through out. This is a real buy for someone needing first class transportation.

PHONE 4821 PRESTONSBURG

ABIGAIL THEATRE

THURS.-FRI., MAY 15-16—
"Abie's Irish Rose"
Joanne Dru, Michael Chekhov,
Part Time Pal.

SATURDAY—
"Six-Gun Serenade"
Jimmy Wakely, Lassie White,
Serial—
"JESSE JAMES RIDES AGAIN"

Sunday, 2:01 p.m. and 10:01 p.m.—
"The Brute Man"
Tom Neal, Lane Adams,
Rondo Hatton,
Love Your Landlord,
Happy Go-Nutty,
Cat's Tale.

SUNDAY-MONDAY—
"It's a Wonderful Life"
James Stewart, Donna Reed,
News.

TUESDAY-WEDNESDAY—
"Bringing Up Father"
Joe Yule, Renie Riano,
News,
Bone Trouble,
Wonder Eye.

THURS.-FRI., MAY 22-23—
"The Fabulous Dorseys"
Tommy Dorsey, Jimmy Dorsey,
J. Blair,
Early Stage Quiz,
Cartoon.

It's Here

Kentucky Waltz
Rocky Road Blues—Bill Monroe

I Want To Be Loved
The Drunkard's Grave—The Bailes Bros.
Drivin' Nails in My Coffin
Inflation
Port to Port Pay
Just 13 Steps Away
Red Silk Stockings and Green Perfume
Heartaches
Managua Nicaragua

ALBUMS
Hal Kemp Memorial Album
A Date with Dinah
Frankie Carle at the Piano
FOR GRADUATION
Autograph Books
Scrap Books
Photograph Albums
Diaries
Gift Soap
Sachets
Handkerchief Holders
Phonograph Record Certificates
and many other beautiful items

THE GIFT BOX

401 Court Street
Prestonsburg, Ky.

CITY-OWNED UTILITIES PAY

Barbourville Water And Power Systems Clear in 8 Years

With a city-owned utility system such as Prestonsburg's ownership of the gas and water companies serving the town, Barbourville, county seat of Knox county, has within the last eight years retired the last of \$170,000 bonded indebtedness incurred in the purchase of water and electric systems operating in the town.

Immediately after retirement of this debt was made, it was announced that (1) there will be a reduction of approximately 12 1/2 percent in charges to power consumers, effective immediately; (2) the town plans additional street and sidewalk paving; (3) whitewash street lights will be installed as soon as possible; (4) the town plans to reduce its tax rate from 75 cents per \$100 assessed valuation to 35 cents, giving Barbourville the lowest tax rate of any fourth-class city in Kentucky; and (5) residents of the town to receive free garbage collection and disposal service.

The utilities purchase, as in Prestonsburg, was financed by the issuance of revenue bonds, without any obligation on the part of the city. The bonds were to run for 18 years. Earnings of the electric and water plants within eight years, in addition to meeting the full retirement of bonds, have been sufficient to carry out improvements as required.

Payment of the city's last bonded indebtedness, which totaled about \$60,000 when the city bought the utilities, was made possible by funds contributed by the utilities. Bonds retired, totaling approximately \$21,000, were in addition to revenue bonds issued to buy the utilities.

The tax-rate reduction is planned in expectation that payment from the utilities to the city will make up the loss in revenue from the proposed 40-cent cut.

Barbourville's outstanding success in municipal ownership of public utilities is attributed to careful planning. No politics is involved, no wasteful practices tolerated, and a three-man commission, serving without compensation, has been in complete charge since the plants were taken over.

Mrs. Charles Chumley, of West Liberty, was the Saturday guest of Mrs. Martin Lee May and family.

MIDWAY THEATRE MELVIN, KY.

FRI.-SAT., MAY 16-17—
"Club Havana"
Tom Neal, Margaret Lindsay,
Serial—Ch. 5—"JUNGLE GIRL"
—also—
"Overland Riders"
(Western)
Buster Crabbe, Patti McCarthy,
Al "Pony" St. John.

SUNDAY-MONDAY—
"Jesse James"
Tyronne Power, Henry Fonda,
Nancy Kelly,
Serial—APE AND THE MONSTERS
News.
Comedy.

TUESDAY-WEDNESDAY—
"Conflict"
Humphrey Bogart,
Serial—"DAUGHTER OF DON Q."

SUGAR STAMP NO. 12 BECOMES VALID JUNE 1

The government Tuesday moved up the cash-in date of the next sugar-ration stamp from July 1 to June 1, but said it must last for five months. The stamp, spare No. 12, will be good for 10 pounds.

An Agriculture Department announcement said it must last until October 31, when rationing and price controls expire unless extended by Congress.

The action was taken, the Department said, to speed sugar into consumer channels before the heavy movement of wheat and other commodities this summer burdens transportation facilities.

Supplies from a big Cuban crop are piling up in Eastern refinery centers to create a "temporary surplus," partly because consumers have been slow to cash in spare stamp No. 11 which became valid April 1 for 10 pounds.

The action came as many in the sugar industry predicted either an end of rationing before October 31 or an increase in the ration because of improved supply prospects and slowness of some European countries to take Cuban supplies.

The government has promised individual consumers 35 pounds this year, compared with 25 pounds last year. Officials say it is too early to know definitely whether there will be any change.

The department said that apparently many household and industrial users, finding supplies available at present, are postponing buying.

Urging early purchases, the agency said a last-minute rush to cash unused sugar-ration coupons when transportation facilities are overtaxed by the movement of other commodities could result in local shortages.

The department also took steps to encourage industrial users to get supplies earlier and to build up larger inventories.

They may now apply June 1 instead of June 10, as announced earlier, for their allocations for the July-September quarter. They also may buy their full allotment as soon as it is granted. Hereafter, they have been required to limit inventories to 30-day requirements.

HOSTESS TO SEWING CIRCLE

Mrs. R. W. Feiler was hostess Friday to an all-day meeting of members of her sewing club. Those present were Mesdames George Cohen, of Mt. Sterling, J. B. Clarke, Woodrow W. Burchett, E. P. Hill, Jr., J. R. Hurt, Marvin Ransdell and Miss Anna Martin.

E. W. Jesse, of Mt. Sterling, was a business visitor here last week.

CHILD BEYOND

Bert, two-year-old son of Mr. and Mrs. George Tackett, of McDowell, died at the Greathart hospital, Martin, Tuesday night. Burial was made at McDowell today (Thursday), the Ryan Funeral Home officiating.

FLOWERS

Phone 716
Norton Floral Co.
FRANK RAMSEY, MGR.
Pikeville, Ky.

IN BOTTLES AND AT FOUNTAINS

Pepsi-Cola Company, Long Island City, N. Y.
Franchised Bottler: Pepsi-Cola Bottling Co. of Pikeville

For Graduation

We Have Selected
Gifts

SHEAFFER PENS FOR MEN AND WOMEN

COMPACTS FOR WOMEN

Wilson's
BILLFOLDS FOR MEN
\$1.50 and up

COSMETIC SETS

Chen Yu \$1.25 Old South \$1.25

Hughes Drug Store

Floyd County's Oldest Drug Store
PRESTONSBURG, KY.

SPRING CLEANING SALE

SUPERIOR CLEANERS offer from May 12 through May 17 a reduction in all cleaning & pressing prices of **20%**

Your winter clothing should be cleaned before being stored away. During this week of special prices is the time to have this work done.

The Superior Cleaners
is now operated by
JOE TAYLOR HYDEN
and offers the following services:

1. 24-Hour Service.
2. All Work Guaranteed.
3. Pick-Up and Delivery.
4. Clothes Insured Against Damage or Loss
5. Minor Repairs by Expert Seamstress at No Extra Cost to You.

TED ROBINSON, Cleaner
with 20 years experience is now with us and supervises all cleaning operations.

TOM KIT HYDEN and JAMES J. HATCHER
will give prompt and courteous service on our truck

Telephone 4811 PRESTONSBURG, KY.

Bean Drilling Company
DOMESTIC AND DEEP WATER WELLS
Bore Holes
Dewatering Holes
PUMPS—Hand and Electric
ALL WORK GUARANTEED
Phone Betsy Layne, Ky.

Protect Your Right To Drive

Kentucky Responsibility Act goes into effect January 1, 1947. Our Auto Liability Policies meet all requirements of this Act.

Spurlin Insurance Agency
Fitzpatrick Bldg. Court Street
PRESTONSBURG, KY.

For Immediate Sale

2 FOUR-DOOR SEDANS,
REGAL DELUXE 1947
MODEL CHAMPION
STUDEBAKERS

Carter & Callihan Funeral Home
Phone 3541 Day, 3542 or 3394 Night
PRESTONSBURG, KY.



**Buy at HOME
for the Home**

KITCHEN CABINETS

Hardwood finish in washable white enamel. Metal pulls, top section 2-door compartment with shelf, metal flour bin with sifter built in. White enamel steel top which resists heat, stains, scratches. Metal bread box with sliding metal cover. Storage compartment has sliding wire shelf and lid rack on door. Also with casters so you can move cabinet around easy.

See Our Price on These Cabinets

Home Furniture Co.

Phone 5121

LANCER, KY.

Owned and operated by Guy Horn and Son, Carl

Fewer Streams in State Are Closed to Fishermen

Fewer streams and other public waters will be closed this year to May 1 to May 20, affects primarily game and fish laws were enacted to control angling during the spawning season.

Qualifying this statement, Earl Wallace, director of the Division of Game and Fish, pointed out that the closed-season, extending from May 1 to May 20, affects primarily the non-navigable streams of the state. The game and fish laws prohibit fishing above the last lock and dam upstream of navigable streams as well as in all waters of non-navigable streams. All private waters are open, but Wallace reminded anglers that they must have licenses to fish at any time in any stream, lake, pond or other waters, private or otherwise.

Kentucky, Herrington, Dale Hollow and Carpenter Lakes are open, as are the lakes in the three state parks—Pennyville in Christian county, Audubon Memorial near Henderson, and Butler Memorial near Corbin.

Contrary to a previous announcement authorizing fishing in Dawson Springs state park, the small lake in

that city will be closed at least until the last of the season. Parks commissioner Russell Dyche. He explained that this lake was stocked last year and, since the fish are not yet of legal size, it would be disastrous to future fishing to open such waters this season.

Due to numerous inquiries concerning Herrington, it was explained that fishing is permissible in all of the lake proper and in Dix river up to the Danville-Lancaster bridge. Fishing is prohibited in Dix river below Dix dam, however.

The Mississippi river is open to fishing to the thread, or middle of the stream where it bounds the state; the Ohio is open the full length of the state and to the opposite bank; the Tennessee within Kentucky is open. The Green Cumberland, Barren, Kentucky and Big Sandy rivers are open—but not above the last lock and dam upstream.

The Tug and Levisa forks of the Big Sandy are open up to the one lock and dam that is located in each stream. Kentucky law, however, governs fishing only to the middle of the Big Sandy and Tug fork which come as state boundaries.

BONANZA

A large crowd attended prayer meeting at the home of Mr. and Mrs. Lee Spradlin Friday night.

Wesley Music and son, Raymond, and daughters, Hazel and Mary Kathryn, and Mr. and Mrs. Andrew Frazier were shopping in Huntington Monday.

A large crowd attended the pie supper here Saturday night. A total of ninety-five dollars was realized for benefit of the church.

Mr. and Mrs. Hager May and Mrs. Bill Frazier were shopping in Paintsville Friday.

Mr. and Mrs. Jim Spradlin and children, of Alger, Ohio, were weekend guests of Mr. and Mrs. T. S. Spradlin.

Rev. Hargis Conley and Jim Yates, of Riceville, were Sunday dinner guests of Mr. and Mrs. R. L. Conley.

NOTICE

Bids on furnishing bond for custodian of free textbooks and for insurance on Floyd county school buses for the year 1947-48 will be received at the office of the Superintendent of Schools up till May 23, 1947, inclusive. Detailed information may be procured at the superintendent's office.

5-8-47 PALMER L. HALL

David Harlers Blank Boldman in First Tilt; Bartley, Attack Leader

David opened his baseball season Sunday with an easy 12-0 victory over Boldman, three David twirlers holding the visiting team to three hits. Bartley started for the winners, slugging out a triple and two doubles in addition to catching a good game. Hubbard had a triple in each game. Hubbard had a triple in each game. Hubbard had a triple in each game.

The box score:
David AB R H
W. Hunt, 3b. 4 0 0
T. Hunt, cf. 3 0 1
J. Hunt, ss. 4 0 0
A. Joseph, 1b. 3 1 1
D. Porter, 2b. 4 0 0
M. Dameron, 1b.-p. 4 0 0
R. Porter, lf. 3 0 0
Joseph, cf. 3 0 0
W. Dameron, p. 2 0 0
Mullins, lb. 1 0 1
Totals 38 12 16

David AB R H
Deaton, cf. 4 1 2
Gavia, cf. 4 0 0
Gable, rf. 3 1 1
Shepherd, lf. 1 0 1
Patton, lf. 5 2 4
Fryar, 2b. 2 0 1
Hager, 2b. 0 0 0
Curran, ss.-lb. 4 1 1
Bartley, c. 4 2 3
P. Capelli, 3b. 3 1 1
Chaffin, 3b. 1 2 0
Hubbard, lb. 1 0 1
Montgomery, ss. 2 0 1
Hudson, p. 2 0 1
Hopson, p. 1 0 0
Luttlenton, p. 2 0 0
Totals 38 12 16

W. E. Jenkins, of McCracken county, sold two registered Duroc hogs weighing 365 pounds each at seven months and 25 days, white scrub and grade hogs of the same age weighed 100 pounds less.



**3-A GRADE
BLOOD-TESTED
CHICKS
IN STOCK**

When you buy chicks, always buy the best as it takes just as much to feed poorer grades as it does the best. U. S. approved, Pullorum-tested.

PAUL FRANCIS
Phone 5501
PRESTONSBURG, KY.

WATER WELL DRILLING

Two rigs in operation.
Forty years' experience.

SEE OR WRITE
S. C. KINZER
ALLEN, KY.

Emma Wins Second Over Replie Steel

Emma defeated Republic Steel Sunday, 10-2, at Emma, Wednesday, and Mosley allowed the losers only six hits. Weddington, making his first start of the season, pitched good ball. The game was featured by Emma's timely hitting and sharp fielding.

Box score:
Emma AB R H
Burkett, ss. 4 3 1
Children, 2b. 4 3 1
J. Gannell, 1b. 5 1 0
E. Mosley, lf. 2 1 0
B. Goble, lf. 2 0 0
K. Hall, rf. 4 0 1
A. Gannell, 3b. 4 0 0
E. Hall, cf. 4 1 0
P. Leslie, c. 2 0 1
H. Weddington, p. 2 0 0
H. Mosley, p. 2 2 0
Totals 37 10 8

Republic Steel AB R H
E. Coleman, cf. 4 0 1
B. Stewart, lf. 1 0 0
Bentley, lb. 3 0 0
Rican, rf. 4 0 1
Wallace, rf. 2 0 0
S. Coleman, ss. 4 1 0
Smith, p. 4 1 0
Sanders, 3b. 4 0 4
Stewart, 2b. 3 0 0
Thacker, 2b. 3 0 0
Clevenger, lf. 2 0 0
Ratliff, lf. 2 0 0
J. Thacker, c. 2 0 2
Totals 34 2 6

SUBSCRIBE FOR THE TIMES

Hornets Roll Over Garrett Black Devils

The Auxier Hornets swamped Garrett Sunday, 19 to 3, to remain the only undefeated high school team in Floyd county. The Hornets have won seven straight against no losses.

In winning over Garrett, Coach Music used every boy on the squad. Gilbert started for Auxier but had difficulty finding the plate, and allowed all three of Garrett's runs. John Pergem, an eighth grader, took over starting the fourth and finished the game, allowing only two hits and no runs.

Jack Wells set something of a record when he closed two home runs in the first inning. Thompson also hit for the circuit.

DR. G. C. COLLINS
DENTIST
Phone 2253 Martin, Ky.

Try this Easy Way to... CLEAN DENTAL PLATES

At last, a scientific way to clean dental plates and bridges. B.E.A.'s clean glass of water. Add a little B.E.A. and you have a magic-like speed, discoloration, stains and debris odor—vanish—the original clean brightness is restored. Ask your druggist for KLEENITE today at H. E. Hughes & Co., and all good druggists.

Clark county homemakers are proving clothes closets by rearranging and the addition of springs and 400 shrubs and 200 perennials exchanged between neighbors.

More than 1,000 flower bulbs have been planted in Harlan county this year.

All Any Sound Bank Will Do

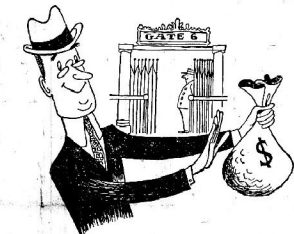
That, in brief, is the service we will render any customer who comes to us for advice, help or any other aid a modern banking institution should render.

Come in and discuss your problems or your plans with us.

FIRST GUARANTY BANK

CAPITAL AND SURPLUS—\$100,000.00
MARTIN, KY.
Member of F.D.I.C.—Deposits guaranteed up to \$5,000.00

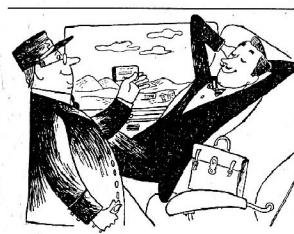
How Your C&O Lines Credit Card Simplifies Travel ON THE C&O, NICKEL PLATE AND PERE MARQUETTE



NO NEED TO CARRY LOTS OF CASH
Your C&O Lines Credit Card is safer—yet just as good as cash for all tickets, meals and baggage service on the Chesapeake & Ohio, Nickel Plate and Pere Marquette.



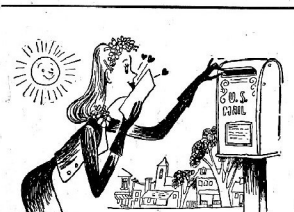
TICKETS TO ANYWHERE IN THE U.S.
can be charged to your Card if any part of your trip starts on the C&O, Nickel Plate or Pere Marquette. Phone to reserve space—your tickets will be delivered to your seat if you so desire.



COACH FARE? PULLMAN? CHARGE 'EM!
No rigger—simply show your Card and sign for tickets and services received! (Business travelers can turn in their duplicate receipts with expense accounts.)



YES! YOU CAN CHARGE MEALS TOO!
And what meals! (We specialize in satisfying cookery.) The Credit Card makes the handling of excess baggage charges easy, too. Number one aim of our three roads is convenience—for passengers.



PAY JUST ONCE A MONTH!
As simple to pay for as to use! C&O Lines Credit Cards give you an accurate record of all tickets and expenses. Available to all qualified individuals and representatives of business firms.



IT'S GOOD BUSINESS—GET ABOARD!
It's the smart way to travel—apply now for your C&O Lines Credit Card at any C&O, Nickel Plate or Pere Marquette ticket office, or write C&O Lines, Terminal Tower, Cleveland 1, Ohio.

Chesapeake & Ohio Lines

TERMINAL TOWER, CLEVELAND 1, OHIO
CHESAPEAKE & OHIO RAILWAY · NICKEL PLATE ROAD · PERE MARQUETTE RAILWAY

MARTIN

FOR SALE
LIMESTONE CEMENT BLOCKS
\$20 per hundred, f.o.b. Louisa. Call us for delivery prices.
LOUISA BLOCK COMPANY
Telephone 26-W LOUISA, KY.

ALLEN & HALL
JOHN ALLEN WADE HALL

GENERAL INSURANCE
See us if you are not driving within the new State Law.

Bankers Life Co.
EASTERN KENTUCKY OFFICE
Phone 6381 Turner Bldg. Prestonsburg, Ky.

AIRCO LEADS
We are headquarters for your welding needs. For your OWN SAKE see us first. We are authorized AIRCO DEALERS. Complete line of oxy-acetylene supplies—torches, regulators, hose, tips, goggles, etc. Also famous Wilson ARC welders, helmets, hobs, electrodes, cable, lenses, etc. Just received the new Phillips Arc Torch, the latest thing in Arc welding. Buy where you can get complete welding service. We have held our services and quality up and prices down. Write for complete new catalogue.

N. M. White, Jr.
Authorized Airco Dealer
Warehouse and Office—West Prestonsburg, Ky.
Office Phone No. 6261 Res. Phone 6263

Carter & Callihan Funeral Home
PHONES: Day, 3541; Night, 3542 and 3594
PRESTONSBURG, KY.
Flowers for all Occasions
NORTON FLORAL CO.
PIKEVILLE, KY.

COMPLETE Funeral Service
With completely new equipment and in a building specially arranged for the type of service we render, we offer to residents of this section.
Helpful, sympathetic service by two graduate licensed embalmers and funeral directors.
Dignity in the conduct of funerals.
Ambulance service at any hour.
Carter & Callihan Funeral Home
MEMBER OF
AMERICAN FUNERAL DIRECTORS ASSOCIATION
SERVING NATION-WIDE
James J. Carter, William R. Callihan, Owners
Day Phone: 3541 Night Phone: 3594, 3542

Robert Anthony (Tony) Keathley, son of Mr. and Mrs. Lawrence Keathley, celebrated his fourth birthday Thursday, May 8. His mother gave a party in his honor, serving refreshments to about 20 children and parents. They played games and were given favors and prizes.
Mrs. Mary Johns, of Eastern, has been visiting her sister, Mrs. Sydney Dugan, at her home here.
Jay Warren Preston, of Detroit, is visiting his parents, Mr. and Mrs. C. A. Preston, and his sister, Mrs. Guy Taylor.
Mrs. Fanny K. Flanery and daughter, Miss Blanche Keathley, visited Mrs. Will Akers and daughter, Mrs. W. A. Robinson, in Pikeville recently. Mrs. Akers is convalescing from a recent illness.
Mrs. Lucile Glickson of Paintsville, has been visiting her niece here in the hospital.
Mrs. Maggie Lee Cassidy and son, Donald, have been here visiting her mother, Mrs. Edna Key, who is in the Beaver Valley hospital. Miss Ola Key of Miami, Fla. was due to Ohio to see her.
Miss Nola Flanery, of Cleveland, Ohio, has been visiting relatives and friends here the past week.
Donald Ray Martin was dinner guest of his cousin, Harry Gene Prefath, Sunday, the occasion being Harry Gene's birthday.
Mr. and Mrs. Anzor Halbert and baby, of McDowell, were visiting Mrs. Lizzie Hill Sunday.
Leonard Pack, of Garrett, visited his parents, Mr. and Mrs. Dock Pack, here recently.
Mr. and Mrs. T. T. Osborne, of Clarksville, Ohio, are visiting their daughter, Mrs. J. D. Adams, and other relatives here.
Mrs. Jim O'Hara, of Detroit, Mich., attended the funeral of Cecil Stumbo, of McDowell, last week. She also visited her brother, Ray Allen, here.
Mr. and Mrs. H. H. Vincent and children, of Huntington, W. Va., were weekend guests of her parents, Mr. and Mrs. W. J. Reynolds.

NEWS FOR THE VETERAN
ADVISES VETS AGAINST EXCESSIVE G.I. LOANS
World War II veterans should seriously consider their present and estimated future incomes and expenses before negotiating G.I. loans, George C. Sturgeon, loan guaranty officer for the Veterans Branch Office in Columbus, O., advised recently.
"Before a veteran decides on a definite home, farm or business property, he should know something about the amount of loan he will be permitted to obtain under the G. I. bill and the approximate monthly payments he will have to make," Mr. Sturgeon said.
He explained that the accepted standard used by many lending institutions is that no loan should exceed a figure two and one-half times a veteran's annual income. In other words, if a veteran's annual income is \$2,000, the maximum loan should be about \$7,500. Another standard is that a veteran's monthly loan payment should not exceed his income for one week. In this case, he should pay no more than \$50 monthly on his loan with a weekly wage salary of \$50.
"In addition to loan interest, taxes and insurance, veterans also should remember that they often may have other expenses connected with the property for repairs and general upkeep," Mr. Sturgeon concluded.

REMIIND VETS OF SEPT. 1 DEADLINE ON LEAVE PAY
Officials of the Veterans Administration Branch Office, Columbus, O., remind World War II veterans of the Sept. 1, 1947 deadline for filing claims for settlement of unused military leave.
All veterans who have not applied for their terminal leave payments are advised to act immediately to avoid delays which might result from an increased number of applications just prior to the deadline date. Application for unused terminal leave should be made to the branch of service concerned and not to VA.
SPECIAL VA COUNSELING OFFERED STUDENT VETS
The Veterans Administration this week called attention to special counseling service available to World War II veterans who have special

LEETE'S FLOWERS
Glad she's your mom?
Flowers from Leete's
Phone 6361—PRESTONSBURG, KY.

Prestonsburg Electric Co.
Prestonsburg, Ky.
ELECTRICAL AND GAS APPLIANCES
FOR IMMEDIATE DELIVERY
RADIOS—all models, Crosley, Stewart-Warner and Emerson \$25.00 to \$329.95
Porcelain Top Sinks, from \$139.00
Estate Gas Ranges, from \$149.95
Dormeyer Electric Mixers \$29.95
Manning-Bowman Waffle Irons \$13.95
Manning-Bowman Percolators \$12.95
BASE AND WALL CABINETS IN A VARIETY OF SIZES TO FIT ANY WALL SPACE FROM 24 IN. UP
REPAIR WORK AND PARTS
FOR ALL WASHING MACHINES
BRIGGS AND STRATTON ENGINES
AND SMALL APPLIANCES

NOW! TODAY!
YOU can get NEW Firestone DeLuxe CHAMPIONS
The Tires You've Waited For...
AT AMAZING LOW PRICES!
Compared to pre-war levels.
BUY ON FIRESTONE EASY BUDGET PLAN
YES, while the cost of some commodities has gone up 100% or more, the prices of Firestone DeLuxe Champions average only 8.1% above 1941. And they are better in quality and in value than pre-war tires.
Right now, when winter weather makes driving more difficult, when accidents caused by unsafe tires are increasing, equip your car with a set of new Firestone DeLuxe Champions, the safest and longest-wearing tires ever built!
ONLY 9.1% INCREASE OVER PRE-WAR PRICES!
Size Price
5.50-16 \$14.35
6.00-16 16.10
6.50-15 19.05
6.25-6.50-16 19.55
7.00-15 21.60
7.00-16 22.15
*Plus Tax

Liberal Trade-In Allowance on Your Old Tires

| | | |
|---|--|--|
| FARM RADIO Battery Operated \$39.95 Battery \$6.95 | DISHES Indian Tree, 35-pc., \$9.95 Blossom Time, 35-pc. \$11.95 Blossom Time, 53-pc. \$18.95 | INSECT SPRAY GUNS Pint 25c Quart 45c Several kinds of Liquid Sprays. |
| ELECTRIC LAWN MOWERS 50-ft. Cord LIMITED SUPPLY \$135.00 | GARDEN HOSE 25 ft. \$2.79 50 ft. \$5.19 Grass Seed Vigoro | BREAKFAST COMBINATION TOASTER and HOTPLATE \$9.95 |
| CAST ALUMINUM Kitchenware 6-pc. Set—Special \$25.60 | AUTOMATIC TOASTERS FAMOUS "CANFIELD" LIMITED SUPPLY \$19.95 | AUTO SUPPLIES brake lining, fan belts, radiator hose, ignition cable, jets, carburetors, fuel pumps. |
| Special This Week Only—TRICYCLES HEAVY DUTY 16-inch \$13.95 18-inch \$14.95 | SOAP GRANULES Fine Quality Special 33c | CONSOLE RADIOS Beautiful walnut finish 10 Tubes \$139.95 |
| DELUXE White SIDEWALL RINGS 15 and 16-inch \$9.95 | DELUXE SPOTLIGHTS Chrome Finish \$16.95 | PORTABLE RADIOS Operates on electric or battery. \$59.95 |

FIRESTONE
Home and Auto Supply
Layne Building Frank H. Layne, Owner Phone 4671
PRESTONSBURG, KY.

Auxier Hornets Tounce Paintsville, 8 to 4

Auxier, Ky., May 7 (Sp.)—A 4-2 3-inning scoreless pitching duel between Mink of the Paintsville Tigers and Lateral of the Auxier Hornets was shattered in the last of the fifth inning Tuesday as the bats of the Hornets exploded for eight runs.

After two men were out in the bottom of the fifth, B. Carmate drew a base on balls and promptly stole second. O. Carmate sent Lou double to left scoring Brother Bob and the rest was under way. O. Carmate stole third base, Sparks grabbed a free trip to first. Sparks was purposely passed, and Hubbard then cleared the bases with a long double to right-center, making the score 4-0. With men singled, Waugh doubled and Lateral homered to make it 8 to 0.

Paintsville scored its lone tally in the sixth on two home errors. Lateral Auxier pitcher had a field day. He allowed only two Paintsville hits, no walks and struck out seven. Tigers while counting a homer in the low Auxier fifth.

The box score:

| Auxier | AB | R | E |
|----------------|----|---|---|
| O. Carmate, 2b | 4 | 1 | 1 |
| Patton, ss | 2 | 1 | 0 |
| Sparks, c | 3 | 1 | 0 |
| Hubbard, lb | 3 | 1 | 0 |
| Wells, 3b | 3 | 1 | 0 |
| Waugh, cf | 3 | 1 | 0 |
| Lateral, p | 3 | 1 | 0 |
| Thompson, rf | 2 | 0 | 1 |
| B. Carmate, lf | 2 | 1 | 0 |
| Totals | 26 | 8 | 3 |

| Paintsville | AB | R | E |
|----------------|----|---|---|
| Milne, ss | 3 | 1 | 0 |
| Bailey, 2b | 3 | 0 | 1 |
| Brugh, 3b-p | 3 | 0 | 0 |
| Castle, c | 3 | 0 | 1 |
| Daniels, lb | 3 | 0 | 0 |
| Gunning, cf | 3 | 0 | 1 |
| Kirk, rf | 3 | 0 | 0 |
| Campson, lf-3b | 2 | 0 | 0 |
| Mink, p | 2 | 0 | 0 |
| Williams, lf | 1 | 0 | 0 |
| Totals | 25 | 1 | 2 |

Leading fruit growers in Boone, Kenton and Campbell counties have planned a cooperative program for the control of insects.

NOTICE

NOTICE OF MEETING AND SELECTION OF CANDIDATES FOR GAME AND FISH COMMISSION OF KENTUCKY

Notice is hereby given that the meeting for selection of candidates for the Game and Fish Commission for the Seventh Congressional district of Kentucky will be held at the county courthouse, county courthouse at Prestonsburg, Ky., Floyd county, on Tuesday, June 18, 1947, at 7:30 p.m.

At this meeting five candidates will be selected by the vote of the spectators, assembled one of which will be appointed by the Governor to serve on the Game and Fish Commission for the next four years. Each sportsman casting a vote for these candidates must have either a hunting or fishing license for both the years 1946 and 1946 or make an affidavit that such licenses are issued to him.

This meeting will be held in accordance with Chapter 100-022 of the Game and Fish laws of the Commonwealth of Kentucky.

DIVISION OF GAME AND FISH OF KENTUCKY
Earl Wallace, Director
5-9-21.

At LEETE'S JEWELRY STORE

Prestonsburg, Ky.

RONSON LIGHTERS
Evans LIGHTERS
ANKLE BRACELETS
IDENTIFICATION BRACELETS
BABY BRACELETS
HAMILTON AND ELGIN WATCHES
RUTH HUNT CANDY
1847 ROGERS BROS.
SILVERWARE

52-pc. set, including chest...\$64.75

Lady Crosby and Treaseland

Registered Diamond

WEDDING SETS

Wallace

STERLING SILVER

JUST ARRIVED—

New shipment of Pottery—

Jardinieres, Vases, etc.

EXPERT WATCH REPAIRING

Your every need in jewelry and gift items of lasting value.

ALLEN

Mrs. George Adcock and children, Marcia and Jimmy, Mr. and Mrs. Ivanhoe McCormick were shopping in Prestonsburg Saturday afternoon.

Mrs. Sam Jarrell and Rosie McCormick visited Mrs. Clara Skeans in Louisa Friday night.

Mrs. Opal Edwards, Mr. and Mrs. K. C. Rambo spent the week-end in Lexington, visiting Mrs. Rambo's mother.

J. C. Brodt, of Pikeville, was a house visitor here Monday.

M. L. Marcum, of Louisa, was a business visitor here Sunday.

Mr. and Mrs. M. D. Connor and son, M. D., Jr., spent the week-end in Huntington, W. Va.

Mr. and Mrs. Felix Crisp had a Sunday dinner guests Mr. and Mrs. John Vandervoort, of Maytown, Pa. Walker Hall, Rev. and Mrs. Johnny Hall, of Harford.

Jack Gray and daughter, Ramona, of Baltimore, Md., visited Mr. and Mrs. G. L. Gray Sunday afternoon.

They spent last week with Mr. and Mrs. Jack Gray, Sr., at Sloan.

Mrs. Belle Ellis, of Prestonsburg, and Mrs. Floyd Lafferty, of Sloan, visited Miss Malinda Lafferty Sunday afternoon.

Frank Preston and daughters, Olga and Mikell, Joan Boyd and Betty Jo Rapp spent Sunday afternoon at Fatsick.

Mrs. Harriett Frazier spent Sunday night with relatives at Sloan.

C. R. Peters, of Martin, was a visitor here Monday afternoon.

Mr. and Mrs. Roy Key have returned from a month's stay in Hot Springs, Arkansas.

Mrs. Angie Lafferty and grandson, Bill, of Sloan, visited Mr. and Mrs. J. W. Lafferty Saturday afternoon.

Mr. and Mrs. H. B. Spaullock, Jr., have moved to their farm in Ohio.

Attending revival services in the Methodist Church in Prestonsburg last week were: Mr. and Mrs. J. W. Lafferty, Mr. and Mrs. Fred Workman and Lora Alice, Mr. and Mrs. G. L. Gray and sons, Frank Gordon and Jimmy Dehara, Mr. and Mrs. G. B. Auker, Mr. and Mrs. George W. Snodgrass, Mrs. L. J. Gerich, Mrs. W. T. Austin, Helen Austin, Edna Mae Allen, Mrs. Palmer Crisp, Mr. and Mrs. Frank Preston and daughter, Mikell, Mrs. Vance Porter, Ben Webb, James Flannery, Mrs. J. H. Carr, Mrs. Olive Martin, Mrs. Rufus Crisp, Mr. and Mrs. Bennie Lafferty and son, Bennie Linwood, Mrs. George Adcock, Galloway Lafferty and W. A. Malone.

Miss Jean Battey is visiting her sister in Welch, W. Va.

Mr. and Mrs. Everett Tackett had as guests Saturday night Mr. and Mrs. S. M. Tackett and baby, of McDowell. On Sunday night their guests were Mr. and Mrs. Carl Moore, of Wheelersburg.

Ninety-four farmers in Greenup county attended a meeting on methods of supplying running water to the farm and home.

HAROLD

(Last week's correspondence)

Harold school gave a play last Friday—"King, Queen and Painter."

Mrs. Lee Cecil was pleasantly surprised by a birthday party given by her daughters, Misses Bertha and Lora Cecil and Mrs. Joe Osborne. Guests were Mr. and Mrs. Otis Cecil, Mr. and Mrs. Ed Cecil, Mr. and Mrs. Ballard Cecil, Lee Cecil, her grandchildren, Jimmie Ray, Freddie Lee and Kenneth Osborne, Mr. and Mrs. Elmer Ferguson, Mrs. Lora McKnight, Mr. and Mrs. Ben Robinson, Mr. and Mrs. P. S. Clark, Mrs. Elizabeth Pritchard, Mrs. Minnie L. Hatcher, Mrs. Cecil was the recipient of many gifts.

Mr. and Mrs. Otis Cecil have moved into their new home.

The young son of Mr. and Mrs. Bill Stapleton is very ill.

Mr. and Mrs. P. S. Clark have returned home after spending the winter in Florida.

DAVID

Those from David attending the 4-H Club rally last Wednesday at the Methodist Church, Prestonsburg: Peggy Bartley, Barbara Thompson, Eva Neil and Lavonia Webb, Alice Hamilton, Julaphine Wilson, Allen Rowland, Janet Ward, Betty June Honeycutt, and the leader, Miss Blanche Garrett.

Those attending the ball game in Cincinnati over the week-end: Tandy Bartley, Virgil Howard, Ernest Wells and Dawson Husey.

Eula Ann Fitzpatrick visited in Garrett over the week-end.

Noah Shansone and Worthy Mink of Sublet, Ky., were guests of Mr. and Mrs. A. C. Wilson Sunday.

Bill Whitaker, of Auxier, visited Mr. and Mrs. Willie Rowland Sunday.

Mr. and Mrs. Ray Stambaugh and children were visiting in Wayland Sunday.

Earl Dawson returned from the Pikeville hospital Friday.

Billy Harman is visiting his grandparents, Mr. and Mrs. Elmer Clark, on Johns Creek.

Those attending the coal show in Cleveland, Ohio, were David L. Francis, Steve Webb, P. Conley and Allen Whitaker.

Mr. and Mrs. W. H. Ratliff attended church at Salisbury Sunday.

CARD OF THANKS

We want to express our sincere thanks to the kind friends and neighbors during the illness and upon the death of our beloved wife and mother, Mrs. Jane Bowling; especially to all who furnished care, the Rev. W. B. Garrison and Rev. W. W. Rose and the Carter & Callahan Funeral Home—Belle Bowling and Family.

FREE! If excess Acid causes heartburn, indigestion, bloating, gas, heartburn, belching, nausea, get a free sample of UDOCA and a free interesting pamphlet at H. E. HUGHES CO.

Dr. H. G. Salisbury, Jr.

Dr. Edward B. Leslie

DENTIST

Layne Bldg., Prestonsburg, Ky.

Phones—office, 3711; Res., 3511

WAGE SCALE, MACHINE AGE REDUCE FARM POPULATION

Only 18 per cent of the people of the United States now live on farms. Church workers were told at the Rural Leadership Institute at the University of Kentucky Experiment Station. The war was not wholly to blame for the movement of youth to cities. It was wrought out. Between 1900 and 1940 about 1,800,000 young men and women left farms.

Big wages in cities and the use of more machinery on farms were blamed for youth quitting the farm. Tractors and other machinery make it possible for fewer people to do the farming.

The relation of soil fertility to community and church welfare received consideration at the institute. Where the soil is good, communities prosper and the church is well supported. Where fertility is exhausted, communities run down and churches disappear.

Report on a church survey showed that there are about 7,000 churches in Kentucky, or one for every 400 persons. Some speakers thought there are too many churches in some communities. As a result all of them are weak.

There are between 2,500 and 3,000 ministers in Kentucky. Sixty per cent of them get a salary of \$1,000 or more a year. In the state as a whole. In the eastern counties only 39 per cent get that much money.

Between 45 and 50 per cent of the

people of the state belong to church. In some communities as high as 65 per cent are members of churches, while in a few places only five per cent are members.

Two hundred and fifty pastors and other church workers attended the institute. They came from 36 counties and from 13 church denominations.

CARD OF THANKS

We gratefully acknowledge the expressions of sympathy and all other kindnesses extended us upon the death of our beloved mother, Bathsheba Webb-Dingus, and would especially thank the Rev. S. B. Rucker for his comforting words, the choir and Mr. Jesse Elliott for the beautiful music and "Red" and Sally Baker for their efficient conduct of the funeral.—The Family.

PHILCO FARM RADIO BATTERIES

DINGUS RADIO SERVICE

Mayo Trail and Dingus St.

PRESTONSBURG, KY.

A HOUSE DIVIDED COSTS YOU MORE!



GO ALL-ELECTRIC

SAVE TIME, WORK AND MONEY

A HOUSE divided between electricity and old-fashioned methods costs you more because it's less efficient.

Completely electrified homes using low-cost easy-to-operate, time and labor-saving electrical conveniences, mean better living, easier work and lower cost.

Cook, Refrigerate, Heat Water, Launder, Clean and Entertain in the home the superlative way—the Electric Way.

An Electric Range will answer, beyond your fondest expectations, all your pent-up wishes for freedom from cooking drudgery... for happiness that comes from the carefree confidence your meals will be delicious... for nutritious food with all the vitamins, minerals and flavorings juices cooked right in—not out, to go down the drain. It's Clean... Safe... Automatic. We know you'll love it.

Job for job, use for use, Electricity is best. Don't use two or more services in your home. Use the one that does more for less—Electricity.

Kentucky and West Virginia POWER COMPANY

THE MORE YOU USE—THE LOWER THE COST

5 STAR PLAN

1. Liberal Trade-in Allowance, or
2. Liberal Credit to Persons Building or Remodeling.
3. Exceptionally Low Financing Charge.
4. Easy Monthly Budget Payments.
5. Low Rates Available for Cooking and Water Heating.



Hang on to your war bonds—you'll be glad you did!

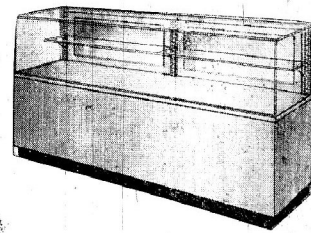
WALL CASES

Shown here are three of our many styles, joined together. For your special needs, choose the three as shown here, or any combination of separate units that your needs indicate. You may have as many of each as your store requires or as your merchandise needs.

COMPLETE STORE INTERIORS

Castle fixtures provide complete store interiors for any kind of store... anywhere. Wall cases, showcases, counters, cash booths. Castle fixtures are not expensive. Castle fixtures are moveable. Thus, with Castle fixtures you can always have the prettiest store in town... and the best arranged.

- BAKED GOODS
- COSMETICS
- TOBACCO - CIGARETTES
- HANGING GARMENTS



SHOW CASES

From our extensive line of proven designs you can select just the type showcase you need. Shown here is only one of the popular numbers. We have... or can make for you... the kind of a showcase that will meet your needs pointedly.

CASTLE SHOW CASE CO.

MANUFACTURERS

1716 FRONT STREET

ASHLAND, KENTUCKY

Call, phone or write. No charge for estimates. We'll cheerfully confer with you to help you solve your lay-out problem.

| No. | Name | Description | Amount | No. | Name | Description | Amount | No. | Name | Description | Amount | No. | Name | Description | Amount | No. | Name | Description | Amount |
|------|-----------------------------------|-------------|--------|------|-----------------------------------|-------------|--------|------|------------------------------|-------------|--------|------|------------------------------|-------------|--------|------|-------------------------------|-------------|--------|
| 4181 | Newsome, Henry, 3-a. | | 13.62 | 5769 | Wright, Sam, 2-a. | | 9.84 | 5940 | Hall, Bill | | 30.00 | 5701 | Johns, Andy, 1-a. | | 10.35 | 5960 | Osborne, Victoria, 1-a. | | 3.00 |
| 4186 | Newsome, Lula, 1-a. | | 13.12 | 5770 | Wright, Wile | | 7.94 | 5941 | Hall, Bob, 2-a. | | 6.70 | 5706 | Johnson, John, 1-a. | | 12.60 | 5968 | Parsons, B. P., 1-a. | | 15.00 |
| 4191 | Newsome, Orville, 4-a. | | 7.67 | | | | | 5942 | Hall, Garfield, 2-a. | | 14.50 | 5716 | Jones, Jesse, 1-a. | | 10.62 | 5970 | Parsons, D. M., 2-a. | | 21.43 |
| 4195 | Newsome, Sally Pearl, 5-a. | | 4.51 | | | | | 5943 | Hall, G. G., 5-a. | | 12.62 | 5717 | Jones, J. M. (Mat), 7-a. | | 26.98 | 5979 | Parsons, Sarah | | 6.16 |
| 4207 | Osborne, Beverly, 1-a. | | 7.94 | | | | | 5944 | Hall, Glenn | | 6.03 | 5722 | Justice, Alice, 1-a. | | 9.62 | 5982 | Parsons, William, 20-a. | | 25.35 |
| 4217 | Osborne, Jessie | | 6.41 | 5143 | Adams, Mrs. Anna, 1-a. | | 3.31 | 5945 | Hall, Jack | | 14.00 | 5725 | Justice, Elbert, 20-a. | | 11.47 | 5986 | Parsons, Manuel, 1-a. | | 13.13 |
| 4222 | Osborne, McKinley, 30-a. | | 11.11 | 5147 | Adkins, Des, 5-a. | | 8.96 | 5950 | Hall, Joe, 2-a. | | 20.80 | 5731 | Justice, Virgil, 2-a. | | 18.27 | 6002 | Ramey, Jackson | | 29.83 |
| 4224 | Osborne, Maryann, 30-a. | | 11.12 | 5149 | Adkins, Richard, 30-a. | | 14.51 | 5951 | Hall, John A. | | 11.37 | 5740 | Kearney, Isaac, 20-a. | | 9.86 | 6010 | Ray, Emery, 20-a. | | 7.66 |
| 4231 | Osborne, Jenny E. | | 6.46 | 5174 | Akers, Jack, Est., 5-a. | | 14.51 | 5956 | Hall, John, 20-a. | | 10.35 | 5741 | Kearney, James, Estate, 4-a. | | 7.53 | 6018 | Reynolds, Walter, 20-a. | | 5.29 |
| 4242 | Overs, Virgie, 2-a. | | 10.86 | 5186 | Akers, Sallie, 25-a. | | 10.45 | 5957 | Hall, John, 20-a. | | 11.13 | 5744 | Kearney, Mrs. Julia, 20-a. | | 6.16 | 6101 | Reynolds, Walter, Adm., 47-a. | | 24.97 |
| 4249 | Parker, William | | 15.51 | 5193 | Akers, Walter S., 20-a. | | 4.78 | 5958 | Hall, John M. Est. (Tickey) | | 9.55 | 5750 | Keith, Howard | | 10.33 | 6024 | Reynolds, Adam, 85-a. | | 30.39 |
| 4251 | Parsons, Fred, 1-a. | | 7.94 | 5203 | Allen, John, 25-a. | | 8.94 | 5958 | Hall, Luther, 70-a. | | 49.86 | 5754 | Kidd, Dallas | | 7.58 | 6032 | Roberts, Floyd, 15-a. | | 20.70 |
| 4253 | Patton, Tom and Ida, 65-a. | | 13.24 | 5214 | Arns, John P. | | 13.25 | 5959 | Hall, Mary, 6-a. | | 10.35 | 5758 | Kidd, George, Ball, 1-a. | | 9.84 | 6049 | Rogers, George, 15-a. | | 7.72 |
| 4273 | Perrier, Hattie | | 4.53 | 5224 | Blair, Dan | | 13.25 | 5960 | Hall, Oliver, 5-a. | | 10.35 | 5758 | Kidd, Green, 70-a. | | 17.29 | 6051 | Rogers, John, 20-a. | | 6.76 |
| 4292 | Raffell, Everett | | 19.22 | 5227 | Booth, Howard, 15-a. | | 10.35 | 5960 | Hall, R. L., 102-a. | | 45.98 | 5769 | Kidd, Mrs. Rhoda, 35-a. | | 9.45 | 6052 | Rogers, John, 20-a. | | 7.58 |
| 4294 | Reynolds, Effert, 1-a. | | 8.96 | 5228 | Boyd, Delia, 10-a. | | 8.96 | 5959 | Hall, Mrs. Rose, 3-a. | | 4.14 | 5774 | King, John, 30-a. | | 13.13 | 6058 | Salsbury, Jay, 20-a. | | 3.33 |
| 4298 | Reynolds, H. D., 1-a. | | 12.33 | 5243 | Boyd, Henry, 1-a. | | 7.50 | 5959 | Hall, Victoria, 12-a. | | 6.17 | 5781 | Kirkey, Mrs. Edna, 10-a. | | 6.43 | 6059 | Salsbury, Penn, 12-a. | | 9.60 |
| 4301 | Rice, Beulah | | 12.33 | 5244 | Boyd, Ireland, 2-a. | | 6.70 | 5960 | Hall, Wayne, 1-a. | | 10.35 | 5782 | Kiser, Andy, 30-a. | | 7.53 | 6064 | Smack, Ray | | 8.63 |
| 4323 | Rackey, Francis and Johnny, 20-a. | | 7.94 | 5254 | Boyd, Nelson, 2-a. | | 6.70 | 5959 | Hall, Willie | | 21.06 | 5783 | Layne, Bill, Russ | | 9.84 | 6079 | Smith, Jim Lee, 15-a. | | 8.21 |
| 4327 | Roberts, Sam, Heirs, 150-a. | | 24.77 | 5259 | Boyd, Virgie, 3-a. | | 7.58 | 5954 | Hall, William, 10-a. | | 10.35 | 5786 | Layne, Cynthia | | 9.57 | 6082 | Spears, Dewey, 20-a. | | 16.35 |
| 4328 | Roberts, Edward, 14-a. | | 6.21 | 5260 | Boyd, Weiss, 7-a. | | 8.96 | 5956 | Hall, Will R., 1-a. | | 6.70 | 5811 | Layne, L. D. | | 4.78 | 6084 | Spears, Dewey, 20-a. | | 16.35 |
| 4335 | Robinson, Talmadge, 20-a. | | 11.11 | 5263 | Brown, Harry, 35-a. | | 23.59 | 5947 | Hall, Zella | | 5.53 | 5813 | Layne, Leonard | | 11.74 | 6085 | Spears, Elvie F., 30-a. | | 12.73 |
| 4343 | Rose, Laidy | | 8.96 | 5276 | Bryant, Monroe, 40-a. | | 13.00 | 5958 | Hamilton, Arnold, 30-a. | | 10.35 | 5814 | Layne, Monroe, 80-a. | | 18.00 | 6091 | Spears, J. W., 40-a. | | 11.13 |
| 4348 | Salsbury, Betty, 20-a. | | 9.84 | 5281 | Bryant, Sallie, 5-a. | | 13.25 | 5959 | Hamilton, Squire, 25-a. | | 10.35 | 5815 | Layne, Richard, 25-a. | | 4.78 | 6093 | Spears, Orrin, 20-a. | | 6.76 |
| 4350 | Salsbury, Charles, 15-a. | | 11.11 | 5277 | Burchett, Lacey | | 8.94 | 5958 | Hamilton, Everett, 30-a. | | 10.35 | 5817 | Layne, Tommy, Mat, 20-a. | | 98.80 | 6094 | Spadlin, Alvin, 25-a. | | 6.56 |
| 4356 | Salsbury, Orr, 15-a. | | 8.96 | 5281 | Burwell, M. L., 1-a. | | 7.58 | 5959 | Hamilton, Henry, 20-a. | | 7.47 | 5822 | Leedy, Nannie | | 5.78 | 6102 | Starnford, Charlie | | 15.90 |
| 4363 | Salsbury, Ruth, 3-a. | | 8.31 | 5288 | Cass, John H., 60-a. | | 6.80 | 5960 | Hamilton, John D., 1-a. | | 3.74 | 5822 | Leedy, Thelma, 1-a. | | 6.96 | 6107 | Stanley, Morgan, 1-a. | | 13.02 |
| 4367 | Sammora, Alex, 2-a. | | 5.18 | 5291 | Cecil, Mrs. Avelia, 12-a. | | 13.08 | 5958 | Hamilton, Jennie, 100-a. | | 21.43 | 5823 | Lewis, Milt, 1-a. | | 10.35 | 6109 | Stanley, W. M., 25-a. | | 11.74 |
| 4368 | Savark, Andrew | | 11.89 | 5293 | Cecil, Bert | | 13.25 | 5959 | Hamilton, Mrs. L. A. | | 3.78 | 5824 | Lester, Woodrow | | 8.96 | 6110 | Steele, J. D., Heirs | | 13.10 |
| 4369 | Savark, Joe, 20-a. | | 12.33 | 5299 | Clark, Richard, 70-a. | | 4.21 | 5958 | Hamilton, Mrs. Maudie, 40-a. | | 10.35 | 5825 | Lester, William, 20-a. | | 12.32 | 6110 | Steele, J. D., Heirs | | 13.10 |
| 4392 | Sione, Cullin | | 7.93 | 5303 | Clark, John C. Heirs, 50-a. | | 12.98 | 5959 | Hamilton, Myrtle | | 10.35 | 5826 | Lester, Louis, 30-a. | | 12.32 | 6110 | Steele, J. D., Heirs | | 13.10 |
| 4394 | Sione, Golda, 25-a. | | 3.21 | 5305 | Clark, H. N. | | 12.98 | 5958 | Hamilton, Nive, 20-a. | | 6.45 | 5827 | Mayo, Lennie D. | | 14.49 | 6148 | Stratton, J. W., 3-a. | | 24.12 |
| 5001 | Sione, Tom, 5-a. | | 3.21 | 5316 | Caldwell, Frank, 28-a. | | 41.81 | 5961 | Hamilton, Sydney, 35-a. | | 11.74 | 5827 | Meade, Clay, 15-a. | | 11.71 | 6149 | Stratton, Laura, 25-a. | | 7.53 |
| 5002 | Sione, Will, 40-a. | | 23.96 | 5327 | Compter, Mollie, 24-a. | | 26.98 | 5962 | Hamilton, Bill | | 46.24 | 5828 | Meade, Elizabeth, 1-a. | | 2.85 | 6152 | Stratton, Roscoe, 3-a. | | 6.16 |
| 5004 | Somers, J. M., 20-a. | | 16.13 | 5328 | Conrad, Dunning | | 13.25 | 5960 | Hamilton, Squire, 25-a. | | 10.35 | 5831 | Meade, Richard, 25-a. | | 6.94 | 6152 | Stratton, Roscoe, 3-a. | | 6.16 |
| 5090 | Strickland, Parson | | 8.96 | 5337 | Corn, Edder | | 12.37 | 5961 | Hamilton, William, 1-a. | | 6.56 | 5832 | Meade, Robert, 20-a. | | 6.16 | 6152 | Stratton, Roscoe, 3-a. | | 6.16 |
| 5099 | Stumbo, General, 3-a. | | 8.56 | 5367 | Damon, Jim and Mollie Conn, 70-a. | | 20.90 | 5962 | Hamon, Cynthia, 80-a. | | 20.94 | 5839 | Mitchell, John O., 7-a. | | 7.47 | 6152 | Stratton, Roscoe, 3-a. | | 6.16 |
| 5107 | Stumbo, Joe K., 1-a. | | 7.33 | 5372 | Daniels, Ray A., 21-a. | | 32.12 | 5962 | Hatcher, Mary, 1-a. | | 14.80 | 5839 | Moore, Henry, Jr., 56-a. | | 22.53 | 6152 | Stratton, Roscoe, 3-a. | | 6.16 |
| 5115 | Stumble, Tom, 20-a. | | 15.39 | 5373 | Daniels, Richard, 20-a. | | 39.08 | 5947 | Hill, Claude | | 13.89 | 5901 | Moore, Lewis, 50-a. | | 13.13 | 6152 | Stratton, Roscoe, 3-a. | | 6.16 |
| 5123 | Tackett, Bert, 20-a. | | 10.35 | 5376 | Davis, Isaac, 30-a. | | 14.48 | 5957 | Horn, Emma | | 14.48 | 5902 | Moore, Sallie, 50-a. | | 6.92 | 6178 | Tackett, Ernest, 40-a. | | 27.09 |
| 5127 | Tackett, Charles | | 10.47 | 5377 | Davis, Vernal, 2-a. | | 7.94 | 5958 | Howell, Ben, 15-a. | | 12.70 | 5903 | Mulkey, Charlie, 1-a. | | 22.16 | 6183 | Tackett, George, 1-a. | | 8.04 |
| 5133 | Tackett, Ervin, 10-a. | | 8.56 | 5406 | Foley, John T. | | 11.71 | 5956 | Howell, Edgar | | 12.70 | 5906 | Murphy, Henry, 20-a. | | 5.33 | 6190 | Tackett, Noah, 5-a. | | 5.53 |
| 5134 | Tackett, Francis and Rocky, 20-a. | | 7.67 | 5407 | Ford, James, 28-a. | | 54.05 | 5967 | Howell, Hayes | | 27.74 | 5912 | McKinney, John, 38-a. | | 8.96 | 6206 | Thompson, Burley, 2-a. | | 7.58 |
| 5961 | Tackett, Luther, 30-a. | | 8.91 | 5408 | Fraser, Reine | | 10.35 | 5969 | Howell, Joe, 102-a. | | 6.18 | 5920 | Nelson, Milton, 30-a. | | 17.48 | 6207 | Thompson, Mary, 65-a. | | 28.16 |
| 5962 | Tackett, Margaret, 30-a. | | 4.75 | 5412 | Fraser, Teddy, 25-a. | | 14.75 | 5962 | Howell, Louis, 20-a. | | 15.65 | 5927 | Nelson, Oscar, 20-a. | | 8.96 | 6208 | Thompson, Mary, 65-a. | | 28.16 |
| 5972 | Tackett, William, 1-a. | | 6.92 | 5414 | Fraser, John, 70-a. | | 18.45 | 5973 | Howell, Stephen, 65-a. | | 12.37 | 5928 | Nelson, Thurnan, 20-a. | | 17.07 | 6210 | Trimbble, Bill, 20-a. | | 12.15 |
| 5976 | Tackett, W. H., 2-a. | | 7.94 | 5419 | Fraser, Robert, 65-a. | | 17.28 | 5978 | Hunter, Walter, 30-a. | | 4.76 | 5932 | Newsome, Charlie, 20-a. | | 11.86 | 6219 | Turner, Alvin, 25-a. | | 4.76 |
| 6075 | Taylor, M. C. | | 20.29 | 5420 | Fraser, Thos, 25-a. | | 10.23 | 5987 | Hunt, Mrs. Artie, 10-a. | | 7.58 | 5993 | Newsome, Emily, 25-a. | | 8.96 | 6227 | Webb, U. S. | | 12.47 |
| 6081 | Thompson, Sallie, 4-a. | | 5.15 | 5422 | Fraser, Willie, 1-a. | | 7.94 | 5998 | Hunt, Mrs. Jane, 65-a. | | 7.72 | 5998 | Newsome, Emily, 25-a. | | 8.96 | 6246 | Wilson, Hester | | 4.92 |
| 6087 | Thompson, Susan, 6-a. | | 11.13 | 5423 | Fugate, Crawford, 15-a. | | 7.94 | 5998 | Hunter, Bill, 30-a. | | 7.72 | 5998 | Newsome, Emily, 25-a. | | 8.96 | 6246 | Wilson, Hester | | 4.92 |
| 6088 | Thompson, Susan, 6-a. | | 11.13 | 5423 | Fugate, Crawford, 15-a. | | 7.94 | 5998 | Hunter, Bill, 30-a. | | 7.72 | 5998 | Newsome, Emily, 25-a. | | 8.96 | 6246 | Wilson, Hester | | 4.92 |
| 6717 | Trotter, Phil, 5-a. | | 7.94 | 5434 | Geartheart, Susan, Heirs, 3-a. | | 3.94 | 5998 | Hunter, Craig, 1-a. | | 7.94 | 5998 | Newsome, Emily, 25-a. | | 8.96 | 6246 | Wilson, Hester | | 4.92 |
| 6718 | Trotter, Joe, 20-a. | | 7.94 | 5434 | Geartheart, Susan, Heirs, 3-a. | | 3.94 | 5998 | Hunter, Craig, 1-a. | | 7.94 | 5998 | Newsome, Emily, 25-a. | | 8.96 | 6246 | Wilson, Hester | | 4.92 |
| 6719 | Vance, Carl, 20-a. | | 11.47 | 5440 | Gunnels, Thomas, 1-a. | | 7.94 | 5998 | Hunter, Craig, 1-a. | | 7.94 | 5998 | Newsome, Emily, 25-a. | | 8.96 | 6246 | Wilson, Hester | | 4.92 |
| 6721 | Vance, Isadore, 70-a. | | 9.84 | 5454 | Hall, Andy, 9-a. | | 6.80 | 5998 | Hunter, Craig, 1-a. | | 7.94 | 5998 | Newsome, Emily, 25-a. | | 8.96 | 6246 | Wilson, Hester | | 4.92 |
| 6729 | Walton, Mrs. Cassie, 70-a. | | 9.84 | 5458 | Hall, Bert, 6-a. | | 7.72 | 5998 | Hunter, Craig, 1-a. | | 7.94 | 5998 | Newsome, Emily, 25-a. | | 8.96 | 6246 | Wilson, Hester | | 4.92 |

In Meade county, there are 49 head of cattle on feed for the Londonville fat cattle show and sale in November.

Old Fitzgerald
BOTTLED IN BOND

OLD FASHIONED
Bourbon Whiskey

Bouquet is the soul of Old Fitzgerald flavor. This fusion of fragrance and taste lends pleasure to this deliciously different, old fashioned bourbon.

100 Proof • Kentucky Straight Bourbon Whiskey
Solely • Weller Distillery, Inc. • Louisville, Kentucky

Let's Go!

A Real Old-Time Bargain Excursion to Washington, D.C.

The Date . . . May 17, 1947

The Rate . . . Round-trip rail fare only \$8.65 plus tax

Special Train

| | | |
|------------------|--------|------------|
| Lv. Prestonsburg | May 17 | 3:10 P.M. |
| Ar. Washington | May 18 | 7:30 A.M. |
| Lv. Washington | May 18 | 7:00 P.M. |
| Ar. Prestonsburg | May 19 | 11:55 A.M. |

Attractions . . Double-header baseball game between the Washington Nationals and Chicago White Sox, Sunday, May 18.

Sightseeing tours to the many interesting buildings of Washington, to Mount Vernon, Arlington and Alexandria at reasonable charges.

Rail Tickets . . A special form with your reserved coach number printed right on it. You are assured of a comfortable seat in both directions.

Refreshments Enroute Cafeteria car in both directions open continuously serving lunches, soft drinks and coffee at reasonable cost.

Here's the first real bargain excursion since the war. A big turnout is expected, so call or see your local ticket agent today and make a reservation.

CHESAPEAKE AND OHIO RAILWAY

KENTUCKY ON THE MARCH

By EWING GALLOWAY

If my weekly pieces didn't have a prearranged plan, I would call this one INNOCENTS ABROAD WAY DOWN SOUTH.

In the last six days Mrs. G. and I have been having around quite a lot in Tennessee, Georgia, Alabama and Mississippi, seeing and learning about the country and the people, and I am passing some of our impressions on to fellow Kentuckians.

Our first stop was in Nashville to see B. T. Gregory, publicity director for the Tennessee Department of Conservation. I drop in on Gregory every year or two to look over his recent collections of photographs and to get a little bit of news for my file in New York. In the last five years I have given Tennessee tens of thousands of dollars worth of publicity that didn't cost the Conservation Department a cent. Mr. Gregory has had photographs taken of nearly everything worth while. He keeps two camera photographers busy all the time. The state's spending some money to publicize everything it has that would interest people all over the nation, and the effort is paying big dividends.

Mr. Gregory handed me a new booklet on sport fishing that had just come off the press. It contains a state dotted all over with lake, river and creek fishing places, and the booklet contains all the directions anybody could want. This booklet is sent to anglers in all neighboring states as well as Tennessee. The Conservation Department operates a chain of fish hatcheries. It even imports big game to breed and distribute in the mountain counties. You can hunt wild deer in Tennessee.

Speaking of animals, I believe I have discovered one of the most important reasons why Kentucky and Missouri mules are popular among shavers in the Cotton Belt. Cotton picking which Dean Thomas as Cooper is teaching to Kentucky farmers through his Experiment Station field research county agents, is practiced by all hill farmers in the Deep South. Sometimes one sees half a dozen rotten or corn pieces in one field, all contoured separately to conform with the lay of the land. A horse probably would require a couple of years to learn to pick cotton in such a field. But the mule, without making a mess of the job. But a mule? Why, he catches on in 10 minutes. He makes a perfect job of it and he is not at all unduly hindered by the following the rows with a degree of accuracy that could be expected of no animal but a mule. We have two smart mules to use with one of Dean Cooper's men comes to the Galloway farm to teach us cotton picking.

I was in the cotton county 20 years old, and cotton farming was so old then that farmers I talked with could not remember when it was started. But we will learn. Kentucky is marching on.

Since your reporter wrote early last year about practical forestry, two kindnotes in Henderson county have thinned their trees and cut out all the underbrush. In the last three days we have driven 500 miles in Georgia and Alabama and I do not recall a minute outside cities and towns that we were not looking at re-planted or thinned trees. If Kentucky has 10,000 acres of well-kept forest, Georgia and Alabama have 10,000,000 acres. The explanation is simple. The Deep South has since realized that lumber was one of its major cash products and set out to restore and conserve that resource. We Kentuckians have taken our lumps for granted, with little thought to really working at conserving it.

As for Southern states, I don't think anybody could fail to marvel at the progress of such places as Chattanooga, Atlanta, Macon, Montgomery. They are clean, lively and beautiful. North of what a Southern newspaper humorist calls Smith and Watson's Line, there are no medium sized cities that surpass the six in the foregoing list.

The acreage of strawberries in Marshall county is about double that of last year.

FOR WATER WELL DRILLING

SEE OR WRITE WILLARD MAY LANGLEY, KY.

Interior Decorating

PAINTING, VARNISHING, and PAPER HANGING

We have the following wallpaper books for those who wish to select the better grade papers: Pan-American, C. C. Aler, Harmony House and Rainbow. We offer four-day service on any order. Books will be delivered to your home for your inspection. We have four men prepared to do your decorating.

Wilse & Melvin Shepherd

Phone 3082 PRESTONSBURG, KY.

Rebekahs Here Observe Friendship Night, May 6

At its regular session Tuesday of last week, Minnie Rebekah Lodge celebrated Friendship Night, having Paintsville lodge as guest. An interesting program was rendered, at the close of which refreshments were served. At the next regular session of the lodge, the Rebekah degree will be conferred on two candidates.

William Kaufman, of McCracken county, sold \$1,377 worth of registered Duroc hogs since he got his first pig as a 4-11-pounder.

MINNIE

Several enjoyed a Mother's Day dinner at the home of Mr. and Mrs. C. L. Collins Sunday,

OPEN HOUSE HERE!

COMING SOON! WATCH FOR THE DATE DON'T MISS IT!

WATCH THIS PAGE NEXT WEEK FOR COMPLETE DETAILS

ATHLETE'S FOOT GERM HOW TO KILL IT IN ONE HOUR

IF NOT PLEASED, your life back. A KILLER GERM FOR THE STRONG. Footsies, TE-OIL. Made with 30 percent alcohol, it PENETRATES, Reaches and kills MORE germs faster. Today at HUGHES DRUG.

Service in New Church To Be Held Saturday

First service in the new Katy Friend church will be held at 7:30 p.m. Saturday, May 17. It is announced by the pastor, the Rev. Rondell Goble. Services will be held on the following day at 10:30 a.m. and a revival of two weeks will begin that night.

Summer School Term Schedule Announced

Summer school at Pikeville College will get under way Monday, June 9, with a full schedule of classes. President A. A. Page announced. The first five-week term runs from June 9 to July 12; the second five-week term, July 14 to Aug. 16.

Students may earn credit in any of the following fields during the first term: Art, Bible, Chemistry, English, Education, Geography, History, Hygiene, Mathematics, Music, Plays and Games, Psychology and Typewriting. Sociology will be offered during the second term.

The Teacher Training program satisfies the requirements for the Provisional Elementary Certificate in Kentucky. Work may also apply toward a diploma in these fields: General Business, Secretarial, Pre-Engineering, Scientific, Pre-Medical or Pre-Dental, Home Economics, and Pre-Law.

Registration will be on Monday morning, June 9, with classwork beginning at 8 p.m., the same day.

GARRETT

Helen Marie Heath, daughter of Mr. and Mrs. Earl Heath, was honored with a birthday party at her home May 2. Her guests were Shelby and Bobby Joe Ruster, Geraldine and Clara Jean Fine, Phyllis James and Willa Dean Parsons, Barbara Redtor, Marie, Tommy and Rosemary Bowling, Shirley Gay Duff, Margie and Betty Scott.

Name Miss Barrett; Girl Scout Training Courses To Be Given

Miss Mae Lou Barrett, for many years a teacher in Pikeville city schools, will assume the duties of executive director of the Sandy Valley Girl Scout Council, Inc., May 19.

The Council serves Floyd, Pike and Letcher counties, in which there are five main districts: Prestonsburg, Pikeville, Wheelwright, David and Jenkins.

Miss Barrett is a native of Pike county and has spent most of her life in Pikeville. She is a graduate of both Pikeville high school and Pikeville College and received her Bachelor of Arts degree from Eastern State Teachers College. She has done additional work at Peabody College, Morehead Teachers College and Georgetown College.

The position which Miss Barrett is taking has been vacant since last fall when Miss Ruth Harrison resigned to become a member of the regional Girl Scout staff.

Pikeville will be host May 19-24 to adult Girl Scout workers from all of Region IV, which includes Kentucky, Ohio and West Virginia.

National training courses will be offered for leaders, parent members and volunteer trainers. These courses will be held at Wright Hall where out-of-town leaders will have their rooms and meals. Courses will start at 10:30 Monday morning, continuing through the week until 4 o'clock Friday.

Adult workers from the area served by the Sandy Valley Girl Scout Council are expected to attend.

—TIMES WANT ADS PAY

College Lets Contract On Airplane-Hangar Gym

Construction has been started on a three-room classroom building for Pikeville College Academy and the contract has also been let for completion of the college's airplane-hangar gymnasium which will seat 2,000 spectators. President A. A. Page announced this week.

Both contracts have been awarded to Joe Justice, of Pikeville, the work being under the Federal Works Agency.

The two structures are to be finished by September, Mr. Page said. The Academy building will be completely modern and fully equipped, at an estimated cost of \$40,000. The lower stories at the back will be used for apartments and garages.

Farmers in Lawrence county have bought about 20,000 feet of drain tile in the past two months, more than half being installed.

MONUMENTS AND MARKERS

All sizes, 1336 different prices. Call 620-W or write us and save money. We guarantee to please you or your money back. If you want to sell monuments, see me at once.

Walter W. Conley, Mgr.
Painleville, Ky.

Administrator's Notice

Notice is hereby given to all persons having claims against the estate of T. P. Henson, deceased, to file same, properly proven, with the undersigned administrator at Ligon, Ky., on or before May 20, 1947, and all persons indebted to said estate are notified to settle same at once. FRED HENSON, Adm'r.
Estate of T. P. Henson, deceased

SNODGRASS INSURANCE AGENCY
"Dependable Since 1906"
POST OFFICE BOX 8
PHONE 2351 ALLEN, KY.

PLUMBING

Of All Types

Also supplies for plumbing repair work.

No job too small or too large.

CHESTER HILL

Phone 3457

PRESTONSBURG

DR. J. M. FINE

EYES EXAMINED
CREDIT TERMS

OPTOMETRIST

GLASSES FITTED
PHONE NO. 113

1607 Winchester Ave., Ashland, Ky.

Sandy Valley Hardware Co.

PHONE 2081

ALLEN, KY.

DUPONT PAINTS AND EXPLOSIVES

MINE SUPPLIES

EVINRUDE OUTBOARD MOTORS

AND FISHING TACKLE

Attention-All Car and Truck Owners

THE TIME IS RIGHT AND THE PLACE IS HERE

AT

River View Garage & Service Station

LOCATED AT EAST END OF WEST PRESTONSBURG BRIDGE

FOR

General Repair, Washing, Greasing and Simonizing

That Good Gulf Gasoline and Gulf Pride Oil, Tires, Tubes, Batteries and a Complete Line of Accessories.

We have a first class mechanic with several years' experience to service your car with the greatest care and dependability.

All work guaranteed. We fix flats and clean your windshield.

CLEAN REST ROOMS FOR LADIES AND GENTS.

If you cannot give us your business, drop around anyway and chat with your old friends.

MECHANIC IN CHARGE
BILL SHERMAN

STATION ATTENDANTS
RICHARD BRANHAM MANUEL HALL